

This file was downloaded from the American Curriculum website



Worksheet Science الملف

[Almanahj Website](#) → [American curriculum](#) → [6th Grade](#) → [Science](#) → [Term 1](#) → [The file](#)

More files for 6th Grade , Subject Science , Term 1

<a href="#">Science Worksheet</a>	1
<a href="#">Science Exam</a>	2
<a href="#">Worksheet about Science Review</a>	3
<a href="#">Worksheet about forms of energy</a>	4
<a href="#">Science test practice</a>	5
<a href="#">Science Test Practice</a>	6
<a href="#">Worksheet about Light</a>	7

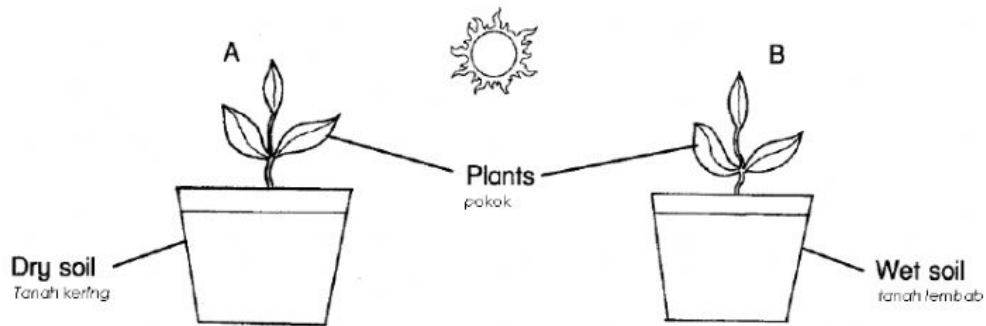
NAMA : .....

KELAS : 4 .....

Answer all the questions.

Write your answer in the space provided.

1. The picture below shows an investigation related to the basic needs of plants.



(a) Predict which plant will die after five days.

*Jangkakan pokok yang mana akan mati selepas lima hari.*

---

[ 1 mark ]

(b) What can you infer from your answer in 1(a).

*Apakah inferen kamu daripada jawapan 1(a)*

---

[ 1 mark ]

- (c) What is your conclusion from the investigation?  
*Apalah kesimpulan kamu daripada penyiasatan ini?*

---

---

[ 1 mark ]

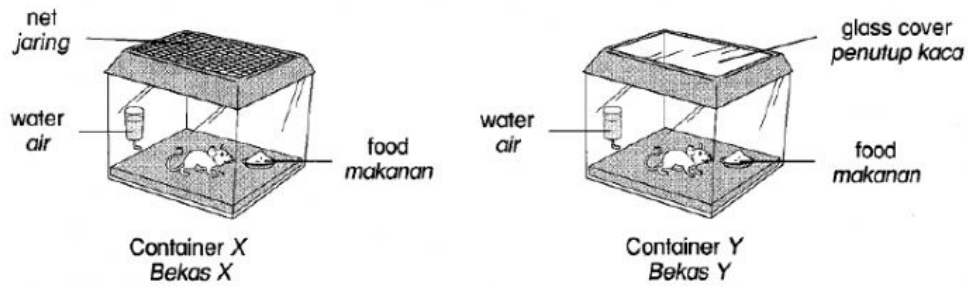
- (d) What are other two basic needs of plants?  
*Apakah dua keperluan asas pokok yang lain?*

---

---

[ 2 marks ]

2. In an investigation, each rat is kept in different containers as shown below.  
*Dalam suatu penyiasatan, setiap ekor tikus diletakkan di dalam bekas yang berbeza seperti rajah di bawah.*



- (a) What will happen to the rat in both containers after five days?  
*Apakah yang berlaku kepada tikus dalam kedua-dua bekas selepas lima hari?*

i. Container X / Bekas X :

---

---

ii. Container Y / Bekas Y :

---

---

[ 2 marks ]

- (b) State one reason (inference) to support your observation in 2(a).  
*Nyatakan satu inferen untuk menyokong pemerhatian di 2(a).*

---

---

[ 1 mark ]

- (c) In this investigation, state  
*Dalam penyiasatan ini, nyatakan*

- i. what is kept the same (constant variable)  
*pemboleh ubah dimalarkan*

---

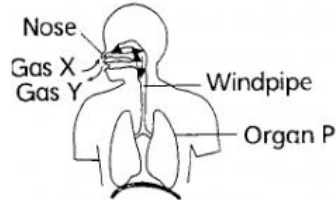
[ 1 mark ]

- ii. what is changed (manipulated variable)  
*pemboleh ubah dimanipulasikan*

---

[ 1 mark ]

3. Organ P in the diagram below is the breathing organ for human.  
*Organ P dalam rajah di bawah menunjukkan organ pernafasan manusia.*



- (a) Name organ P.  
*Namakan organ P.*

---

[ 1 mark ]

- (b) When humans breathe, gas X is taken in while gas Y is given out by organ P. What are gasses X and Y?  
*Apabila manusia bernafas, gas X disedut masuk manakala gas Y dihembus keluar. Apakah gas X dan Y itu?*

i. gas X :

---

ii. gas Y :

---

[ 2 marks ]

(c) Base on the figure above, write the passage of air when  
*Berdasarkan rajah di atas, tulis laluan aliran udara apabila*

i. we inhale  
*kita menarik nafas*

---

---

ii. we exhale  
*kita menghembus nafas*

---

---

[ 2 marks ]

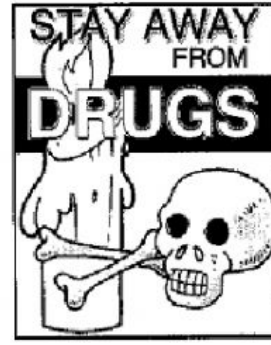
4. Figure shows three posters which are exhibited in a campaign.  
*Rajah menunjukkan tiga buah poster yang dipamerkan dalam sebuah kempen.*



P



Q



R

- (a) State three bad habits that are discouraged in Poster P, Q and R.  
*Nyatakan tiga tabiat buruk yang tidak digalakkan dalam Poster P, Q dan R.*

i. P :

---

ii. Q :

---

iii. R :

---

[ 3 marks ]



- (b) State two health problems caused by the bad habit stated in 3(a).  
*Nyatakan dua masalah kesihatan yang disebabkan oleh tabiat buruk di 4(a).*

i. \_\_\_\_\_  
\_\_\_\_\_

ii. \_\_\_\_\_  
\_\_\_\_\_

[ 2 marks ]

GOOD LUCK  
SELAMAT MAJU JAYA

Disediakan oleh,

.....  
( EN. RIDZWAN ZAINAL ABIDIN )

Disahkan oleh,

.....  
( KETUA PANITIA SAINS )