

This file was downloaded from the American Curriculum website



cubes and Cuboids about Worksheet الملف

[Almanahj Website](#) → [American curriculum](#) → [6th Grade](#) → [Math](#) → [Term 1](#) → [The file](#)

More files for 6th Grade , Subject Math , Term 1

Worksheet about Cuboids and cubes	1
Worksheet about Baseline	2
Worksheet about Math Test	3
Worksheet about Math review	4

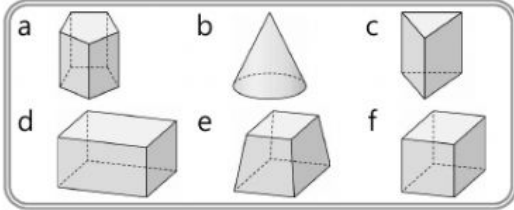
Have
Fun!

5th grade math

5. Cuboid

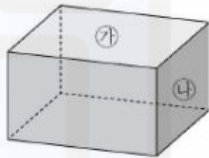
학교 _____
학년 반 번 _____
이름 _____

01 Find all the cuboids.



()

[02~05] Answer the questions



02 What shape is face ㉗?

()

03 When face ㉗ and face ㉘ meet, what is the angle formed?

()°

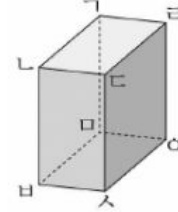
04 Fill in the blanks. Write down the parts that are visible and not visible.

parts 구성 요소	visible	not visible
num. of faces	3	
num. of edges		3
num. of vertexes		

05 If you draw all the faces of a cuboid on a piece of paper, how many pairs have the same shape and size?

()pairs

[06~08] Answer the questions.



06 Which face is parallel to face ㄱㅁㅇㄴ? face ()

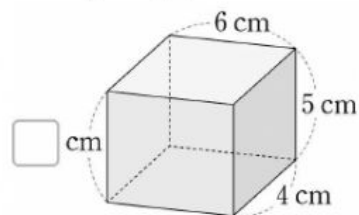
07 How many faces are perpendicular to a face? ()

08 Including line ㄴㅅ, how many line segment have the same length as line ㄴㅅ? ()

09 Which is not correct about a cube? ()

- ① There are 6 faces.
- ② There are 12 vertexes.
- ③ All the faces are square.
- ④ There are three pairs of faces what are parallel to each other.
- ⑤ There are 3 faces perpendicular to a face.

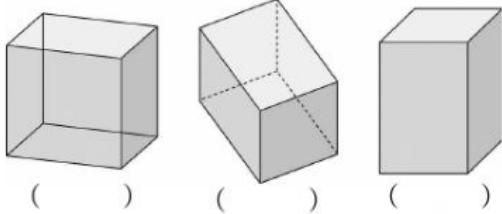
10 Fill in the blank. □



11 If the sum of all the edges of a cube is 72cm, what is the length of one edge?

() cm

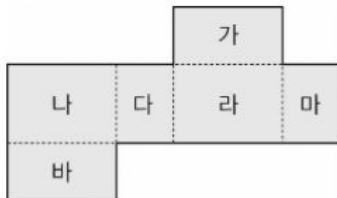
12 Which is the correct way of drawing a net?



13 Circle the correct words.

When you are drawing a net of a cuboid, visible edges should be drawn with (solid line/ dotted line) and not visible edges should be drawn with (solid line/ dotted line.)

[14~16] This is a net of a cuboid. Answer the questions.

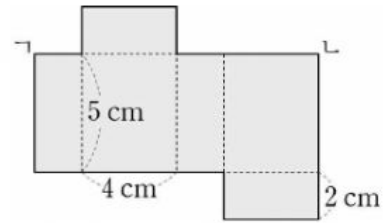


14 Which face is parallel to face '다'?
face ()

15 Find all the faces that are perpendicular to face '나.'
()

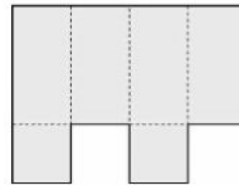
16 How many pairs of faces have the same shape and size?
() pairs

17 Find the length of line segment \overline{KL} .



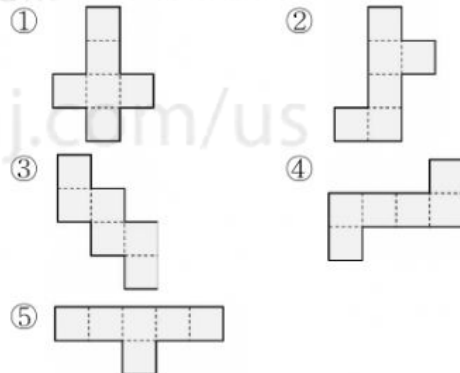
() cm

18 What is wrong this is net?



이유 _____

19 Which is not a net of a cube? ()



20 Draw •(dots) on the faces so that the number of parallel faces can be 7.

