

This file has been downloaded from the Almanahj website



The file: Worksheet about Science Objective Assessment

[Almanahj Website](#) ⇒ [American curriculum](#) ⇒ [1st Grade](#) ⇒ [Science](#) ⇒ [Term 1](#)

More files for: 1st Grade subject Science - Term 1

Worksheet about Sience Review	1
Science Exam	2
Worksheet about SCIENCE STUDY GUIDE	3
SCIENCE STUDY GUIDE	4
Worksheet about science process skills	5
Living and non living things	6
Worksheet about Healthy and Unhealthy Food	7

Social Media links for 1st Grade



M Circle the correct answer.

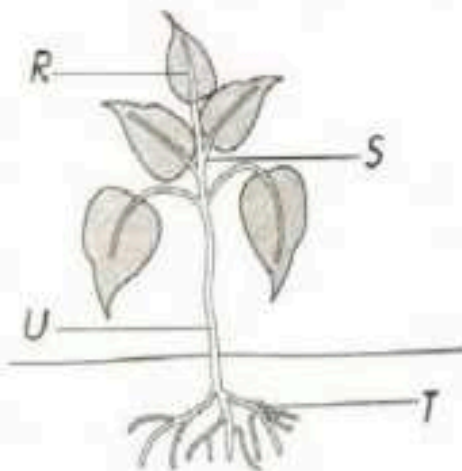
1. The diagram below shows an animal's body part.



What is the name of that part?

- A Mouth
- B Beak
- C Nose
- D Tongue

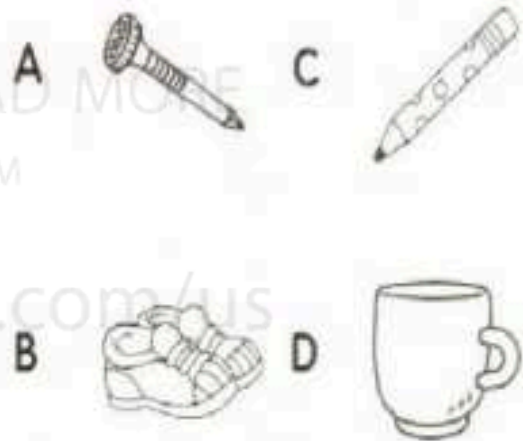
2. The diagram below shows the parts of a plant.



What is the part that functions to absorb water?

- A R
- B S
- C U
- D T

3. Which of the following objects can be attracted to magnets?



4. The diagram below shows two magnets that are brought near each other.



What will happen?

- A Magnets repel
- B Magnets attract
- C Magnetic attraction will break
- D Magnetic attraction will increase

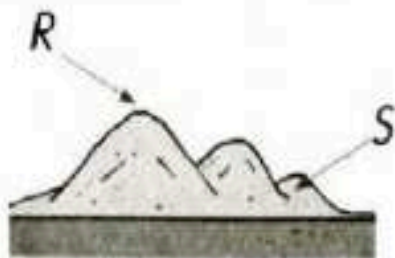
5. Water in a glass spilt under the table. How can Ali dry it quickly?

- A Wipe it using a newspaper
- B Wipe it using a plastic
- C Wipe it using tissues
- D Wipe it using manila cards

6. Which of the following is true?

	Plants	Flowering
A	Fern	Yes
B	Hibiscus plant	No
C	Rose plant	No
D	Brinjal plant	No

7. The diagram below shows a landform.



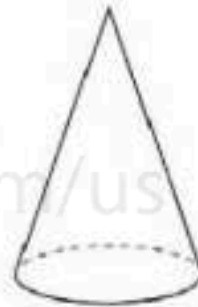
What are R and S?

- A Mountain and hill
- B Hill and mound
- C Mound and rock
- D Mountain and mound

8. Abu found that the soil he collected has rotting leaves and twigs. What is the type of soil that Abu collected?

- A Sand
- B Garden soil
- C Clay
- D Paddy soil

9. The diagram below shows a shape.



What is the name of the shape?

- A Triangle
- B Circle
- C Sphere
- D Con

10. What is the suitable shape for use to make a roof on a house?

- A Triangle
- B Rectangle
- C Cylinder
- D Cube