

This file was downloaded from the American Curriculum website



Practice ScienceTest الملف

[Almanahj Website](#) → [American curriculum](#) → [4th Grade](#) → [Science](#) → [Term 1](#) → [The file](#)

More files for 4th Grade , Subject Science , Term 1

Science Review For Test	1
Worksheet about English Review	2
Science test about parts of a plant and their functions	3
Worksheet about the concept of pot gardening and fertilizers and fermentation.	4
Worksheet about machines natural science	5
Worksheet about Earths Rotation and Revolution	6
Worksheet about Vibrations and Sound	7

Science Test Practice

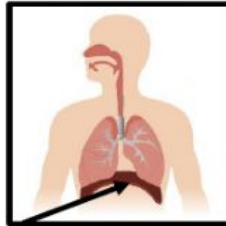
Choose the best option

A group of organs and tissues that work together to perform specific functions.

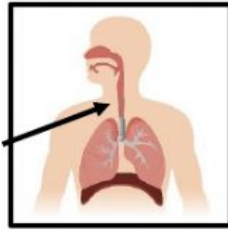
- A. organ system
- B. organs
- C. cells
- D. tissue

brain, liver, stomach

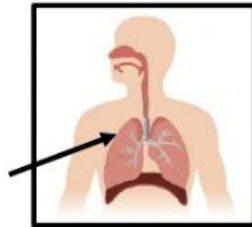
- A. organ system
- B. organs
- C. cells
- D. tissue



- A. nasal cavity
- B. trachea
- C. diaphragm
- D. lungs



- A. nasal cavity
- B. trachea
- C. diaphragm
- D. lungs



- A. nasal cavity
- B. trachea
- C. diaphragm
- D. lungs

_____ and mucous work to trap dirt and germs before we inhale.

- A. Exhale
- B. Inhale
- C. Brain
- D. Cilia

The _____ controls the rate of breathing.

- A. Exhale
- B. Inhale
- C. Brain
- D. Cilia

When we _____ air enters through the nose and mouth.

- A. Exhale
- B. Inhale
- C. Brain
- D. Cilia

It makes up 2% of the blood.

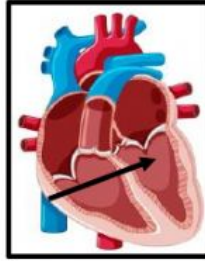
- A. red cells
- B. white cells
- C. plasma
- D. blood cells

It makes up 45% of the blood.

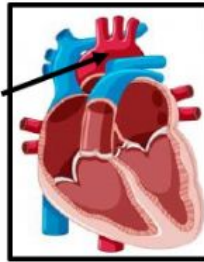
- A. red cells
- B. white cells
- C. plasma
- D. blood cells

It makes up 43% of the blood.

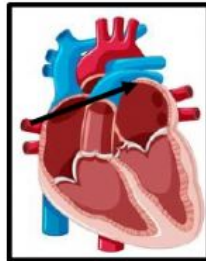
- A. red cells
- B. white cells
- C. plasma
- D. blood cells



- A. Left ventricle
- B. Right atrium
- C. Left atrium
- D. Aorta



- A. Left ventricle
- B. Right atrium
- C. Left atrium
- D. Aorta



- A. Left ventricle
- B. Right atrium
- C. Left atrium
- D. Aorta