

This file has been downloaded from the Almanahj website



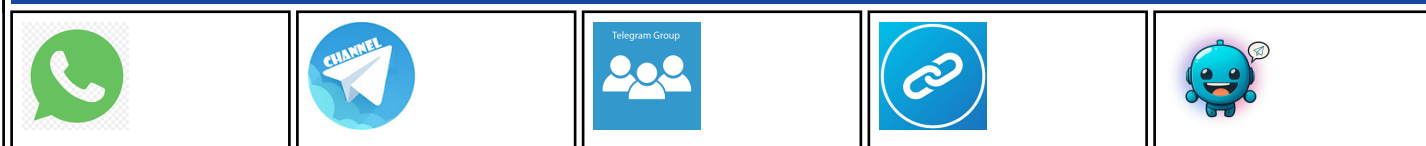
The file: Worksheet about SCIENCE STUDY GUIDE

[Almanahj Website](#) ⇒ [American curriculum](#) ⇒ [1st Grade](#) ⇒ [Science](#) ⇒ [Term 1](#)

More files for: 1st Grade subject Science - Term 1

SCIENCE STUDY GUIDE	1
Worksheet about science process skills	2
Living and non living things	3
Worksheet about Healthy and Unhealthy Food	4

Social Media links for 1st Grade





VICTORIA THANG LONG SCHOOL

School year: 2021-2022/ Class:

Name: _____

Subject: Science

THE STUDY GUIDE FOR THE 1ST MID-TERM TEST



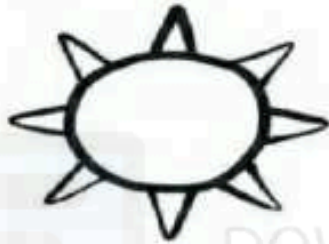
PART I. SCIENCE VOCABULARY & KNOWLEDGE REVIEW

Topic	Science vocabulary	Science knowledge
Plants	<i>A vine, a fern, to survive, different, a part</i>	<ul style="list-style-type: none">❖ Plants need light, air, soil and water to survive.❖ The parts help plants survive.
Roots, Stems and Leaves	<i>Leaf, leaves, root, roots, stem, stems, trunk, take in, hold up</i>	<ul style="list-style-type: none">❖ Plants need light, air, soil and water.❖ Leaves take in air and light to make food.❖ Stems move water through the plant, and hold up leaves and plant.❖ Roots take in water, and hold the plant in place.
Flowers and Fruits	<i>Flowers, fruits, seeds, size, shape</i>	<ul style="list-style-type: none">❖ Some plants have seeds, flowers and fruits.❖ Flowers and fruits also help plants live and grow.
Life Cycle of a Tomato Plant	<i>A tomato, tomatoes, a tomato plant, a cycle, young plants, adult plants, seedling, produce</i>	<ul style="list-style-type: none">❖ There are 4 stages in life cycle of a tomato plant:❖ Each fruit holds many seeds.❖ A seed planted in soil can grow into a seedling.❖ Seedlings can grow into young plants. Young plants become adults.❖ Adult tomato plants can grow flowers. The flowers produce fruits.
Young Plants Look Like Their Parents	<i>Pine trees, slash pine trees, young slash pine trees, adult slash pine trees, rough bark, pine cones, needles</i>	<ul style="list-style-type: none">❖ Young plants can be like their parents or they can be different.❖ They can be the same shape and color. Many plants grow bigger as they get older.

PART II. PRACTICE

Task 1. Look and match the needs of a plant.

1.



a.

soil

2.



b.

water

3.



c.

air

4.

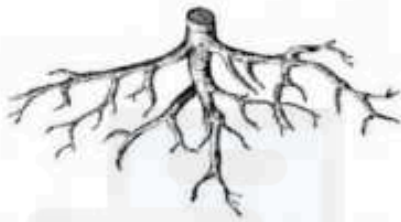


d.

sun

Task 2. Read and match.

5. Roots



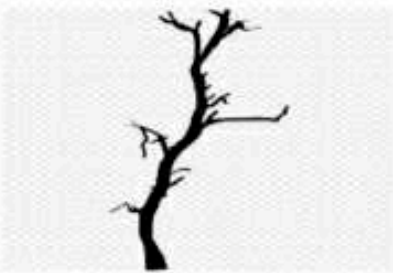
a. take in air and light to make food.

6. Leaves



b. move water through the plant, and hold up leaves and plant

7. Stems



c. take in water, and hold the plant in place.

Task 2. Circle the correct answer. True or False.



8. Flower is a living thing.

True / False



9. The parts help plants survive.

True / False



10. Leaves take in water.

True / False



11. There are 3 stages in life cycle of a tomato plant.

True / False



12. Needles are skinny and green leaves of pine trees.

True / False



13. The young slash pine tree has thick trunk.

True / False



14. Each tomato holds many seeds.

True / False

Task 4. Choose more than ONE answer.

15. Plants need _____ to survive.

- A. Air
- B. Water
- C. Light
- D. Soil



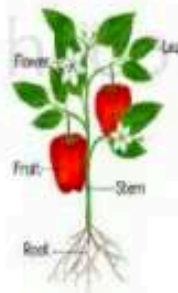
16. What does the adult slash pine have?

- It has _____.
- A. thin trunk
- B. thick trunk
- C. needles
- D. pine cones



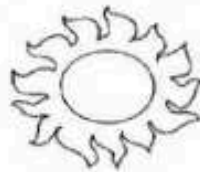
17. What parts help each plant survive?

- A. root
- B. stem
- C. leaf
- D. fruit
- E. flower



Task 5. Circle the correct answer.

18. Plants need _____ from the sun.



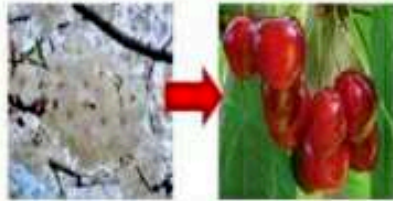
A. light	B. water	C. flowers
----------	----------	------------

19. Our T-shirts come in _____ sizes.



A. different	B. same	C. similar
--------------	---------	------------

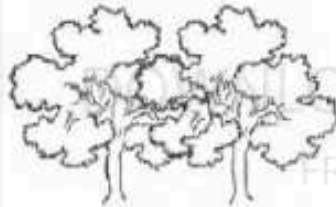
20. What can turn into fruits?



A. trunk	B. flowers	C. fruits
----------	------------	-----------

21. What are these?

- These are _____.



A. flowers	B. roses	C. trees
------------	----------	----------

22. The adult slash pine tree is covered with _____ bark.



A. soft	B. smooth	C. rough
---------	-----------	----------

23. What are these?

- These are _____.



A. pine cones	B. young slash pine trees	C. vines
---------------	---------------------------	----------

24. What does "different" mean?



A. look like others	B. the same, similar to others	C. not the same, not similar to others.
---------------------	--------------------------------	---

25. Fruits contain _____.



A. flowers

B. seeds

C. trees

26. What plant has feather-like leaves?



A. a vine

B. a fern

C. a tree

27. What are these fruits?
- These are _____.



A. papayas

B. cherries

C. strawberries