

This file was downloaded from the American Curriculum website



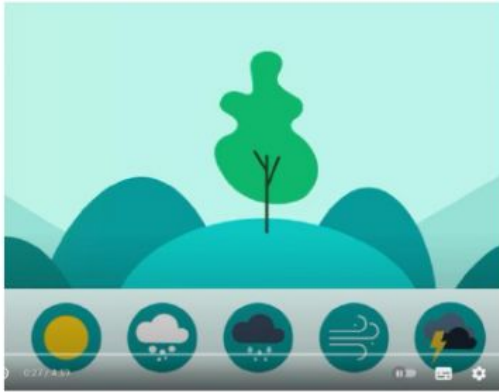
EARTHS about Worksheet الملف

[Almanahj Website](#) → [American curriculum](#) → [6th Grade](#) → [Geology](#) → [Term 1](#) → [The file](#)

More files for 6th Grade , Subject Geology , Term 1

Worksheet about Main imaginary lines of the Earth	1
Worksheet about Features on Earth's surface	2
Worksheet about Earths Moving Surface	3
Worksheet about Earth	4
Worksheet about Earth Day History	5
Worksheet about Radiation on Earth	6
Worksheet about Convection on Earth	7

1. What is climate?



- a. The temperatures, rain and snow.
- b. The combination of atmospheric conditions that occur in place for a prolonged period of time.

2. Weather conditions have remained the same over the years everywhere.



- a. True
- b. False

3. What are natural disasters?



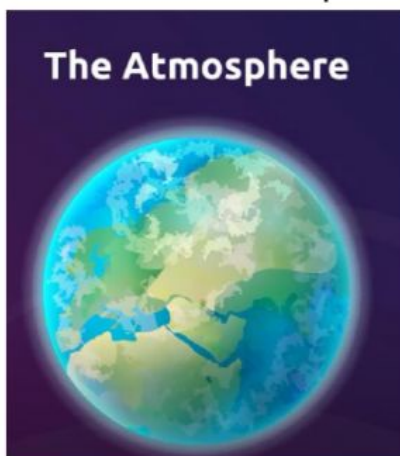
- a. Water shortage, desertification, lake disappearances and sea level rises.
- b. Droughts, floods, huge storms.

4. What is global warming?



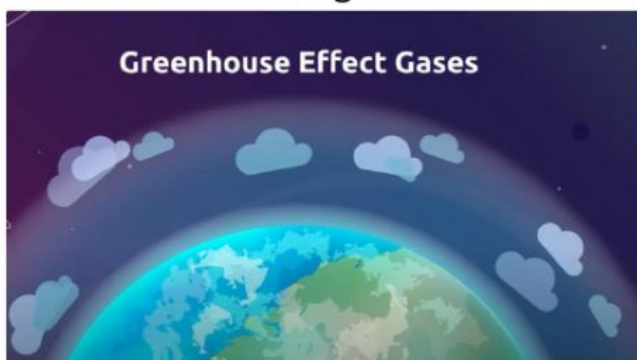
- a. The increase of temperature caused mainly by human activity.
- b. Summer temperatures.

5. What is the atmosphere?



- a. A thin layer of gas.
- b. A thin layer of water.

6. The mission of the greenhouse effect gasses is:



- a. to absorb all of the energy received and lower the planet's temperature.
- b. to absorb part of the energy received and maintain the planet's temperature.

7. What is the main greenhouse gas?



- a. O_2
- b. CO_2

8. With the industrial revolution, CO_2 emissions started to go:



- a. up
- b. down

9. The impact on people's lives, economy and all living beings is



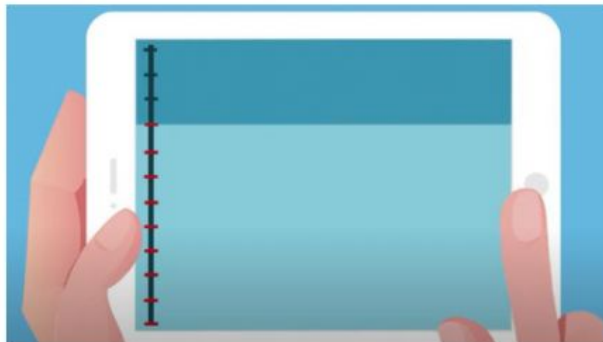
- a. positive
- b. negative

10. How many degrees Celsius are TWO degrees Fahrenheit?



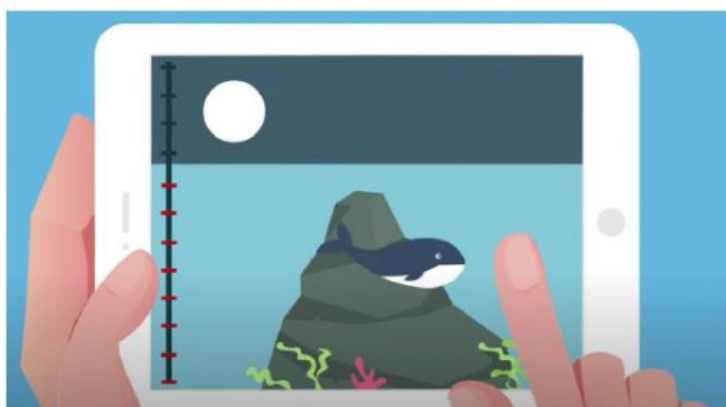
- a. 2
- b. 17
- c. 50
- d. 120

11. The amount of ice has decreased, causing sea levels to



- a. rise
- b. go down

12. Between 1901 and 2010 the sea level has risen



- a. 12 inches (30.48 cm)
- b. 7.5 inches (19.05 cm)
- c. 5 inches (12.7 cm)

13. Renewable energies can help.



- a. true
- b. false

14. We should use more cars, even for short distances.



- a. true
- b. false

15. We should use less plastic.



- a. true
- b. false

16. We should



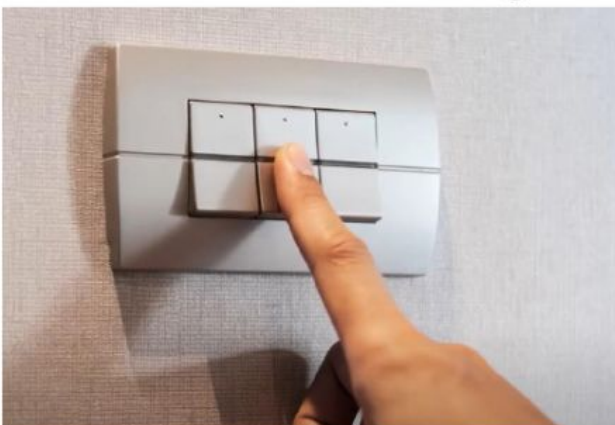
- a. plant any tree species.
- b. plant a local tree species.

17. We should recycle



- a. always
- b. sometimes

18. We should turn off the lights at all times.



- a. true
- b. false