

This file was downloaded from the American Curriculum website



exchange gas about Worksheet الملف

[Almanahj Website](#) → [American curriculum](#) → [5th Grade](#) → [Science](#) → [Term 1](#) → [The file](#)

More files for 5th Grade , Subject Science , Term 1

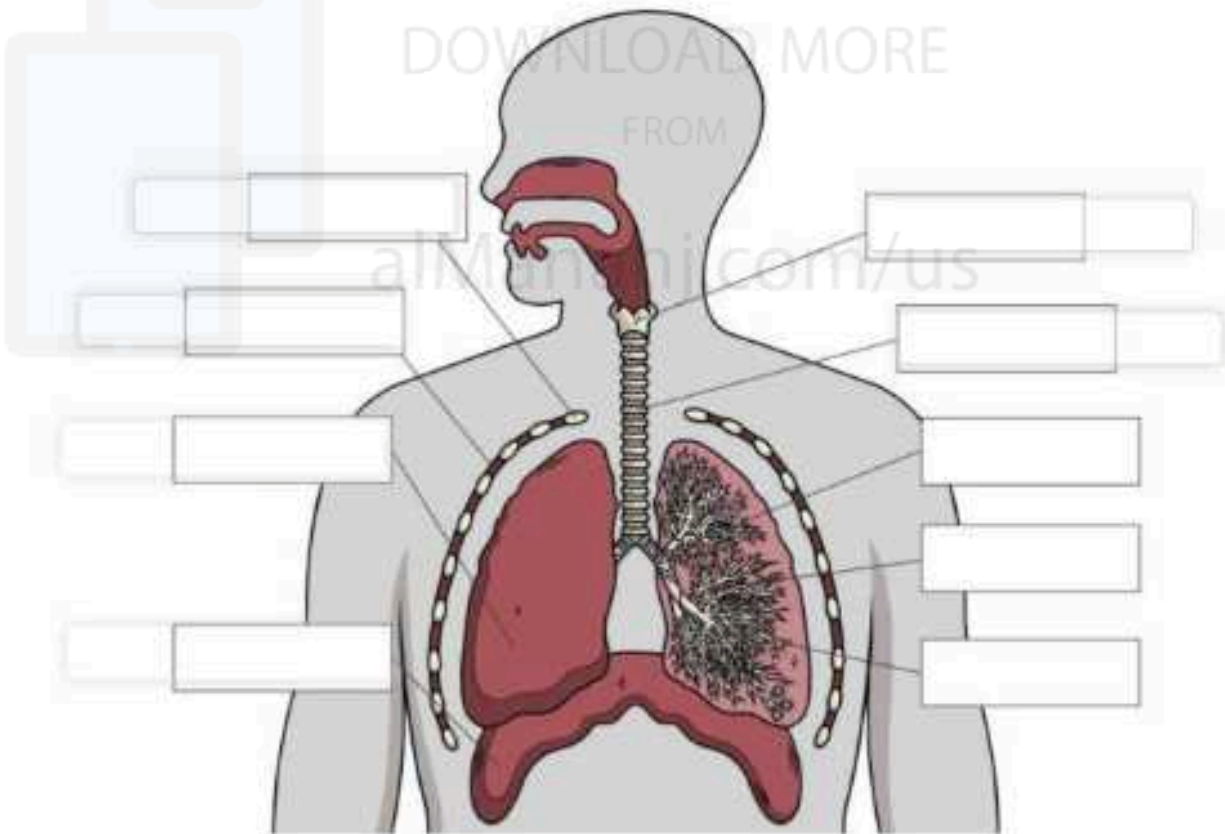
Worksheet about gas exchange	1
Science and physics exam	2
Worksheet about introducing science	3
Worksheet about Science Process Skills	4
Worksheet about science review	5
worksheet about Parts of the plants (following with the answers)	6

Name: Date:.....

Lesson 1.2 GAS EXCHANGE

Question 1. Use the word bank to label the diagram of the lungs below

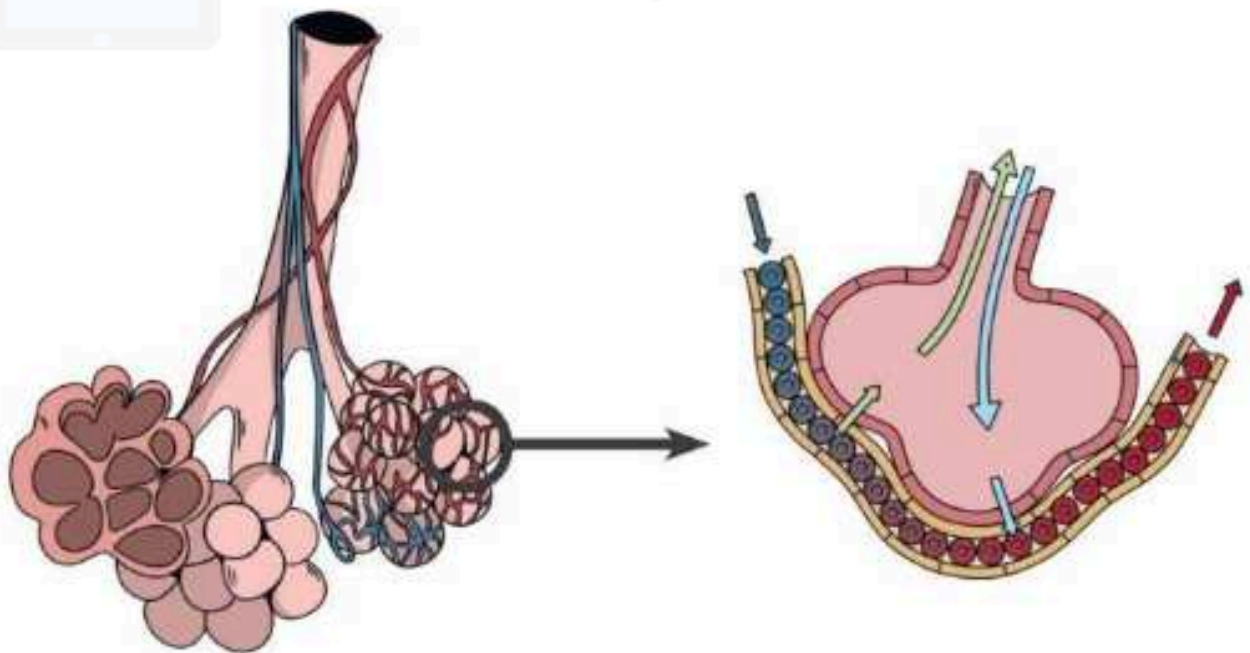
alveoli	bronchioles	trachea
rib	intercostal muscles	bronchi
lung	diaphragm	larynx



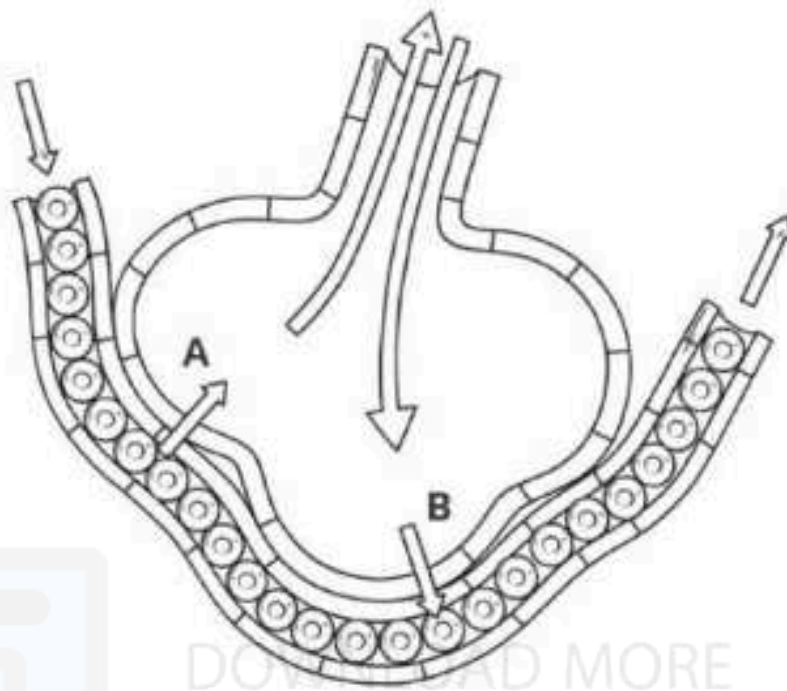
Question 2. Complete the graph using given words in the box

exhalation	intercostal muscles	bronchioles
alveoli	carbon dioxide	capillaries
rib cage	absorbed	inhalation
oxygen	bronchi	diaphragm

The lungs are protected by the _____. The _____ move the ribs when you breathe, however, the muscle responsible for moving air in and out of your lungs is the _____. The body takes in _____ and releases _____. The process of taking air in is called _____ and removing air is called _____. As you trace the path of airflow, the air moves down the trachea and into the _____ and then to the _____. The bronchioles then further branch out to structures that look like a bunch of grapes. These are the _____. Each alveolus (singular of alveoli) is surrounded by _____ which is a vessel so small that only red blood cells fit through. As the blood moves past the alveoli, oxygen is _____ and attaches to each red blood cell. Carbon dioxide is removed from the blood and back into the alveoli where it can travel back up through the lungs to be exhaled.



Question 3. The diagram below demonstrates gas exchange occurring at the alveolus.



a. Label the gases identified as A and B.

A

B

b. Describe what is happening in the image above (suggestion: write about the concentration of air particles in both parts before and after the main process, the movement of air particle)

.....

.....

.....

.....

.....

.....

.....

c. Explain **two** ways that alveoli are adapted for gas exchange.

.....

.....

.....