

This file was downloaded from the American Curriculum website



Resources s'Earth about Worksheet الملف

[Almanahj Website](#) → [American curriculum](#) → [6th Grade](#) → [Geology](#) → [Term 1](#) → [The file](#)

More files for 6th Grade , Subject Geology , Term 1

[Worksheet about Earth's Weather](#)

1

[Worksheet about Convection on Earth](#)

2

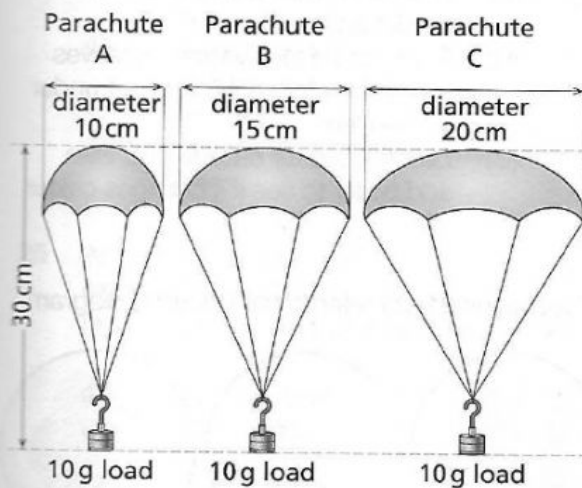
[Worksheet about Geology](#)

3

Practice questions

- Which of the following is NOT one of the Earth's natural resources?
 - Air
 - Water
 - Plastics
- An important use for soil is:
 - Making concrete
 - Helping plants to grow
 - Cleaning the air
- Which statement BEST describes what happens as an object falls through the air?
 - The air warms the object up
 - The air speeds the object up
 - The air slows the object down

Questions 4–6 refer to the parachutes below.



- Which parachute falls the fastest when dropped?
 - A
 - B
 - C

- Which parachute has the largest surface area?
 - A
 - B
 - C
- Which force is slowing all of the parachutes down?
 - Gravity
 - Air resistance
 - Magnetism
- Which of the following is an example of a solid waste material?
 - Ground water
 - Plastic drinking straw
 - Oil

- Which of the following is the BEST way to dispose of waste cardboard?
 - Burn it to make energy
 - Add it to landfill
 - Recycle it
- Which of the following is a useful way to dispose of hedge and grass cuttings?
 - Compost them
 - Throw them into a nearby river
 - Burn them
- Waste plastic should be disposed of by:
 - Burning
 - Composting
 - Collecting it to recycle

- (A) (B) (C)
- (A) (B) (C)
- (A) (B) (C)
- (A) (B) (C)

- (A) (B) (C)
- (A) (B) (C)
- (A) (B) (C)
- (A) (B) (C)

- (A) (B) (C)
- (A) (B) (C)

- 11** One disadvantage of landfill sites is:
 (A) They can leach poisons into water supplies
 (B) They bury waste so it cannot smell
 (C) They keep waste away from towns and cities
- 12** Which of the following BEST defines litter?
 (A) Any material that is thrown out
 (B) Solid waste left in the wrong place
 (C) Paper left in a trash can
- 13** Which of the following is NOT a way that litter damages habitats?
 (A) Trapping and choking animals
 (B) Attracting more sunlight
 (C) Breaking down to give poisons
- 14** Resources that CANNOT be replaced over time are called:
 (A) Non-renewable
 (B) Renewable
 (C) Alternative
- 15** Two advantages of recycling waste materials are:
 (A) Recycling means materials are easier to find and use
 (B) Recycling uses less energy and fewer raw materials
 (C) Recycling makes more objects than the original ones
- 16** Three ways to reduce solid waste are:
 (A) Re-use, recycle and reduce
 (B) Burn, store and compost
 (C) Repair, return and release
- 17** Which gas is needed for burning to take place?
 (A) Nitrogen
 (B) Carbon dioxide
 (C) Oxygen
- 18** An example of a polluting substance caused by burning is:
 (A) Nitrogen
 (B) Carbon monoxide
 (C) Water vapour
- 19** Which of the following would reduce air pollution?
 (A) Burn more fuel
 (B) Cut down trees
 (C) Use wave or wind power
- 20** John wants to measure air pollution. Which of the following methods should he NOT use?
 (A) Use an air filter and check the filter for dirt and dust
 (B) Place some sticky tape on leaves and then remove it to look at under a hand lens
 (C) Leave a beaker outside and then add water to see if it changes colour

Questions 21–23 refer to the following diagram.

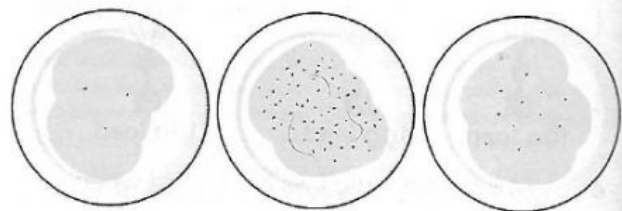


Plate A

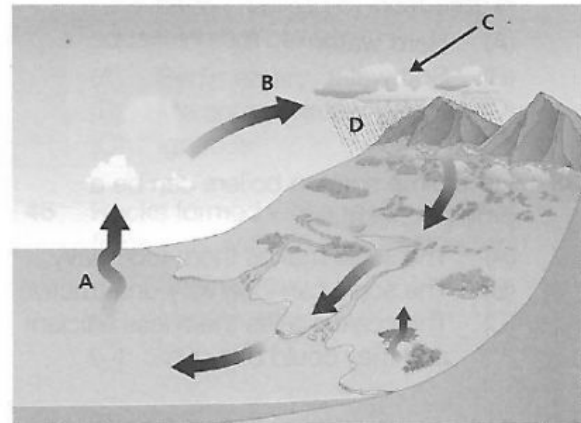
Plate B

Plate C

- | | | | | | | | | | | | |
|-----------|-----|-----|-----|-----------|-----|-----|-----|-----------|-----|-----|-----|
| 11 | (A) | (B) | (C) | 15 | (A) | (B) | (C) | 19 | (A) | (B) | (C) |
| 12 | (A) | (B) | (C) | 16 | (A) | (B) | (C) | 20 | (A) | (B) | (C) |
| 13 | (A) | (B) | (C) | 17 | (A) | (B) | (C) | | | | |
| 14 | (A) | (B) | (C) | 18 | (A) | (B) | (C) | | | | |

- 21** The paper plates have Vaseline smeared on. Why?
 (A) The Vaseline stops them from becoming dirty
 (B) The Vaseline traps any solid pollution that falls from the air
 (C) The Vaseline makes the plates smooth so they are easy to move
- 22** Which plate was left in the most polluted area?
 (A) A
 (B) B
 (C) C
- 23** Which plate was left in the least polluted area?
 (A) A
 (B) B
 (C) C
- 24** A reason that one area was more polluted than the others could be:
 (A) Areas just vary and no one knows why
 (B) The most polluted area could be near somewhere that burns a lot of fuels
 (C) One area could be much nearer to the sea
- 25** An area where pollution would be expected to be high is:
 (A) Near power stations burning oil or coal
 (B) Near mountains
 (C) Inside houses
- 26** When air is heated it:
 (A) Changes colour slightly
 (B) Becomes heavier and falls
 (C) Takes up more space and rises

Questions **27–30** refer to the diagram below.



- 27** The process shown by the letter A in the diagram is:
 (A) Condensation
 (B) Cloud formation
 (C) Evaporation
- 28** The part of the diagram labelled B shows:
 (A) Condensation
 (B) Evaporation
 (C) Melting
- 29** What are being formed during process C?
 (A) Winds
 (B) Clouds
 (C) Mountains
- 30** The process shown at stage D is:
 (A) Condensation
 (B) Evaporation
 (C) Precipitation
- 31** Two sources of natural fresh water are:
 (A) The sea and caves
 (B) Lakes and rivers
 (C) Coral reefs and soil

- 21** (A) (B) (C)
22 (A) (B) (C)
23 (A) (B) (C)
24 (A) (B) (C)

- 25** (A) (B) (C)
26 (A) (B) (C)
27 (A) (B) (C)
28 (A) (B) (C)

- 29** (A) (B) (C)
30 (A) (B) (C)
31 (A) (B) (C)

32 Water that will not easily lather with soap is called:

- (A) Hard water
- (B) Soft water
- (C) Heavy water

33 Fur or lime scale in boilers can be a problem because:

- (A) The scale makes them too heavy
- (B) The scale can look very unattractive
- (C) The scale makes them less efficient and they could blow up

34 Water shortages cause problems for living things. Which of the following is the MOST serious problem?

- (A) They cannot swim from place to place
- (B) They could overheat
- (C) They can dry out and die

35 An example of human activity that can pollute water is:

- (A) Letting sewage and other waste flow into rivers
- (B) Burning fossil fuels
- (C) Recycling plastics and paper

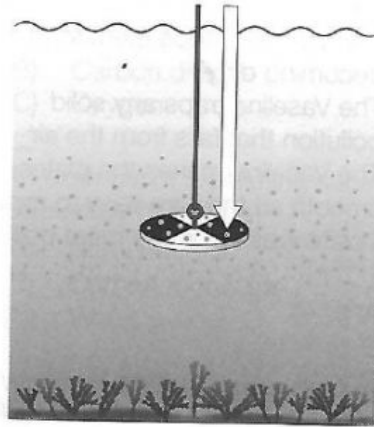
36 Water pollution can be prevented by:

- (A) Treating sewage and not throwing litter into rivers and the sea
- (B) Having more landfill sites
- (C) Using more fossil fuels

37 When water is polluted it is often more cloudy. This is called:

- (A) Transparency
- (B) Transpiration
- (C) Turbidity

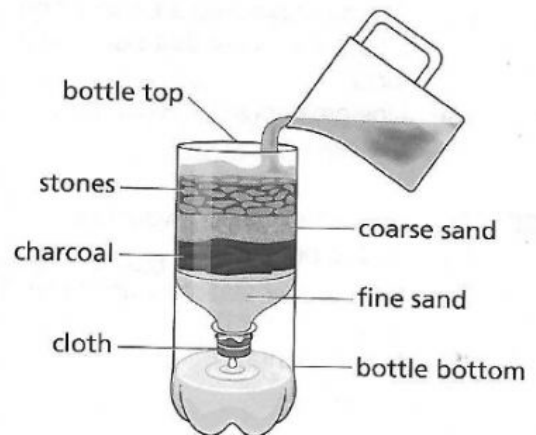
Question **38** relates to the diagram below.



38 The device works by:

- (A) Catching dirt in the water and bringing it to the surface
- (B) Looking less clear when looked at through cloudy water
- (C) Spinning faster in cloudy water

39 What can the device below be used for?



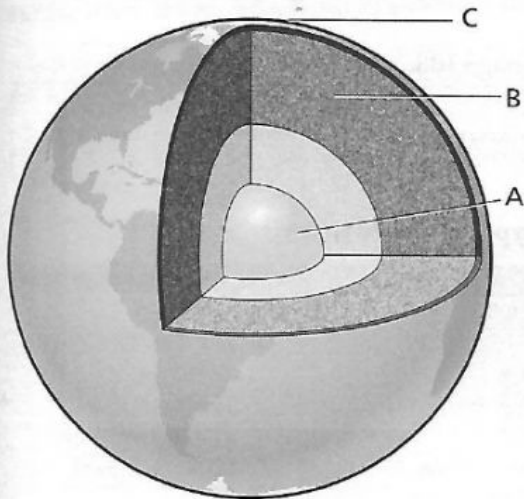
- (A) Making drinks
- (B) Making hard water into soft water
- (C) Cleaning polluted water

- 32** (A) (B) (C)
33 (A) (B) (C)
34 (A) (B) (C)

- 35** (A) (B) (C)
36 (A) (B) (C)
37 (A) (B) (C)

- 38** (A) (B) (C)
39 (A) (B) (C)

Questions 40–42 relate to the diagram below.



- 40 The layer of the Earth labelled A is the:
 (A) Mantle
 (B) Crust
 (C) Core
- 41 The layer of the Earth labelled B is the:
 (A) Mantle
 (B) Crust
 (C) Core
- 42 The layer of the Earth labelled C is the:
 (A) Mantle
 (B) Crust
 (C) Core
- 43 Rocks formed from the cooling of molten material are called:
 (A) Sedimentary
 (B) Metamorphic
 (C) Igneous
- 44 Rocks formed from other rocks which have been changed by heat and squashing are called:
 (A) Sedimentary
 (B) Metamorphic
 (C) Igneous
- 45 Rocks formed when rock or animal fragments settle in layers are called:
 (A) Sedimentary
 (B) Metamorphic
 (C) Igneous
- 46 Three types of soil are:
 (A) Weak, strong and wet
 (B) Loam, clay and sandy
 (C) Dark, light and dry
- 47 The dark brown material in soil is made from dead animals and plants. This material is called:
 (A) Humus
 (B) Minerals
 (C) Lime
- 48 Soil erosion can be decreased by:
 (A) Removing trees from the soil
 (B) Planting trees
 (C) Digging for stone in a quarry.
- 49 Soil erosion is highest on:
 (A) Flat land
 (B) Gently sloping land
 (C) Steep slopes
- 50 Which of the following is an example of a landform?
 (A) Mountain
 (B) Lake
 (C) River

- 40 (A) (B) (C)
 41 (A) (B) (C)
 42 (A) (B) (C)
 43 (A) (B) (C)

- 44 (A) (B) (C)
 45 (A) (B) (C)
 46 (A) (B) (C)
 47 (A) (B) (C)

- 48 (A) (B) (C)
 49 (A) (B) (C)
 50 (A) (B) (C)

How did I do?

A Now check the answers to the practice questions on page 108.

20 or fewer question correct:
You need to revise all areas much harder

21–40 questions correct:
You need more revision in weak areas.

41 or more questions correct:
Well done – you can move to the next topic

B Use the table below to identify topics and question types you need to revise.

Sub-topic	Topic area	Question numbers
Waste and recycling	Resources and air	1–6
	Disposal of solid waste	7–11
	Litter	12–13
	Recycling and re-using objects and materials	14–16
Air pollution	Burning and air pollution	17–19
	Detecting and investigating air pollution in different areas	20–25
	Cold and warm air	26
Water pollution	Water cycle	27–30
	Sources of water and hard and soft water	31–33
	Human impact on water supply and preventing and reducing water pollution	34–36
	Devices for detecting turbidity	37–38
	Methods of cleaning polluted water	39
The Earth	Structure of the Earth	40–42
	Types of rocks	43–45
	Soil	46–49
	Landforms and water bodies	50

Notes

Now look back again and see whether there are any particular types of questions that you find more difficult. For example:

- Questions involving the **labels on a diagram** (questions 27–30 and 40–42), the structure of the Earth (questions 40–42). Make sure you understand how this kind of diagram works.
- Questions including the word **'MOST'** or **'BEST'** (questions 3 and 4). Remember to just select the one that is the best fit.
- Questions **linked to an investigation** (questions 4–6). Remember that the largest parachute will have the largest surface area. This will meet more air and so be slowed down the most.
- Questions with the words **'CANNOT'** and **'NOT'** (questions 1, 13 and 14). You are looking for an answer that does not fit.

C Complete the *How did I do?* table

How did I do?	Earths Resources
Date I completed the tests	
Total score	
Types of questions I found easy	
Types of questions I found difficult	
How can I improve?	