

حل أسئلة اختبار تدريبي Exam Mock منهج انسابير



تم تحميل هذا الملف من موقع المناهج الإماراتية

موقع المناهج ⇨ المناهج الإماراتية ⇨ الصف السادس ⇨ علوم ⇨ الفصل الثالث ⇨ ملفات متنوعة ⇨ الملف

تاريخ إضافة الملف على موقع المناهج: 2025-05-30 20:52:47

ملفات اكتب للمعلم اكتب للطالب ا اختبارات الكترونية ا اختبارات ا حلول ا عروض بوربوينت ا أوراق عمل
منهج انجليزي ا ملخصات وتقارير ا مذكرات وبنوك ا الامتحان النهائي ا للمدرس

المزيد من مادة
علوم:

التواصل الاجتماعي بحسب الصف السادس



صفحة المناهج
الإماراتية على
فيسبوك

الرياضيات

اللغة الانجليزية

اللغة العربية

التربية الاسلامية

المواد على تلغرام

المزيد من الملفات بحسب الصف السادس والمادة علوم في الفصل الثالث

أسئلة اختبار تدريبي Exam Mock منهج انسابير بدون الحل

1

حل المراجعة النهائية الأسئلة الكتابية وفق الهيكل الوزاري منهج بريدج

2

المراجعة النهائية الأسئلة الكتابية وفق الهيكل الوزاري منهج بريدج

3

مراجعة عامة متبوعة بنماذج اختبارات وزارية سابقة

4

مراجعة وملخص وحلول وفق الهيكل الوزاري منهج بريدج

5

Science Department

Mock Exam

Term 3 - 2023/2024

Grade: 6 (General)

Copy 1 Answer Sheet

Levels (Bloom's Taxonomy)	Difficulty level	Symbol	Percentage
Remember	Easy- Medium	E,M	20
Understand	Easy- Medium	E,M	20
Apply	Easy- Medium-Difficult	E, M, D	20
Analyze	Easy- Medium-Difficult	E, M, D	20
Evaluate	Difficult	D	10
Create	Difficult	D	10

Part 1

20 Questions- Multiple choice

Q1. E-Remember

The way a trait is expressed or appears is known as its: _____.

- a. Genotype
- b. Phenotype
- c. Inheritance
- d. Gene

Q2. E-Understand

The loss of animal habitats occurs when _____.

- a. Deforestation
- b. Urbanization
- c. Climate Change
- d. Reforestation

Q3. M-Apply

Which is the most likely description of a seed that is dispersed by wind?

- a. It can float.
- b. It has a thick, hard shell.
- c. It has a waterproof coating.
- d. It is light and small.

Q4. M-Remember

In _____, an offspring grows from piece of the parent organism.

- a. Fission
- b. Budding
- c. Regeneration
- d. Sexual reproduction

Q5.M-Remember

Which of the following causes air pollution?

- a. Volcanic eruptions
- b. Burning of fossil fuels
- c. Forest fires
- d. All the above

Q6.E-M-Understand

Which best describes something you could do to reduce pollution when disposing of household chemicals?

- a. Make sure they get into landfills.
- b. Make sure they don't enter storm drains.
- c. Make sure to put them out with other trash.
- d. Make sure to pour them down the sink.

Q7.M-D-Analyze

The mating season for white-tailed deer is just two to three months long. Male deer grow antlers before each breeding season. They use their antlers to fight each other to establish dominance in bachelor herds and earn the right to mate with certain females. Scientists claim that this aggressive behavior increases the chances of successful reproduction for the entire deer population. Which statement best supports this claim?

- a. Healthier male deer can grow larger antlers.
- b. Healthier males are better able to protect their young.
- c. This behavior extends the length of the mating season.
- d. This behavior gives healthier males a better chance to mate.

Q8.M-D-Apply

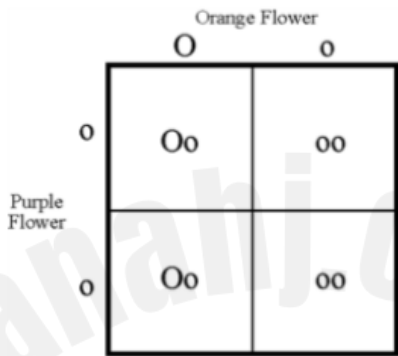
Bird A has the genotype ll for bill length, and Bird B is LL. The bills of their offspring would be:



- a. Long in 100% of the offspring.
- b. Short in 100% of the offspring.
- c. Long in 50% of the offspring.
- d. Short in 50% of the offspring.

Q9.D-Apply

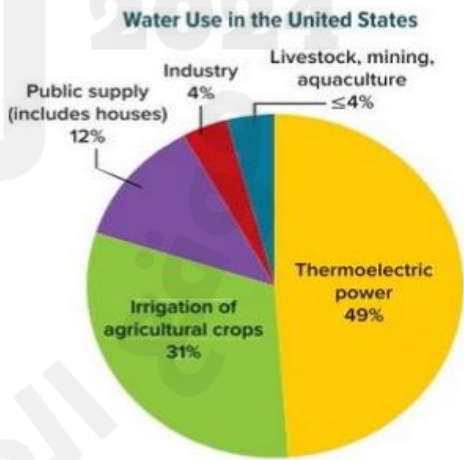
A heterozygous orange-flowered plant is crossed with a homozygous purple-flowered plant. If orange is a dominant allele and purple is recessive, what color ratio will the flowers of the offspring plants have?



- a. 1 purple: 3 orange
- b. 4 purple: 0 orange
- c. 2 purple: 2 orange
- d. 0 purple: 4 orange

Q10.M-Analyze

The pie chart represents human water usage in the USA. Which sector consumed the least amount of water?



- a. Thermoelectric power
- b. Public supply
- c. Industry
- d. Livestock

Q11.E-M- Analyze

What is the primary purpose of animal behaviors and specialized plant structures in reproduction?

- a. Attract predators
- b. Ensure survival
- c. Enhance growth
- d. **Increase the chances of successful reproduction.**

Q12.E-M-Apply

The table lists a family's average water usage per day over several days.

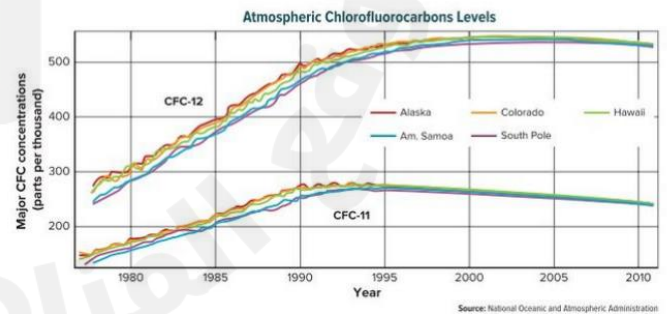
Daily Activity	Water Used
Taking a short shower	95 L
Taking a bath	150 L
Running the dishwasher	38 L
Watering lawn and plants	30 L

The family wishes to reduce their weekly water usage as much as possible. Here are three proposals for how to do this. Which will save the most water?

- a. Proposal 1: Five times a week substitute a short shower for bath.
- b. **Proposal 2: Run the dishwasher five times a week instead of seven times a week.**
- c. Proposal 3: Water the plants three times a week instead of five times a week.
- d. None of the above.

Q13.M-Analyze

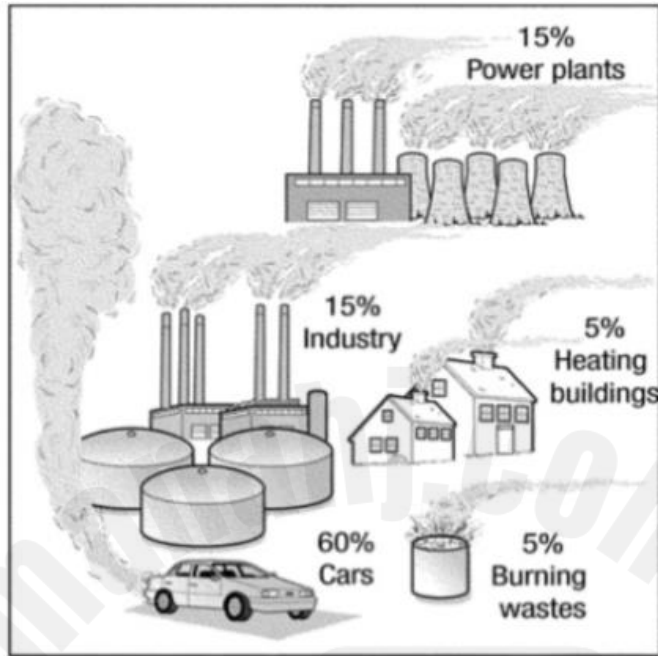
What patterns do you notice in the data about CFC12.



- a. **CFC12 has steadily increased over the years.**
- b. CFC12 has steadily decreased over the years.
- c. CFC12 has the same growth as CFC11.
- d. CFC12 is not a issue for the atmosphere.

Q14.D-Evaluate

The graphic shows where air pollution begins in a local community. Which would be the most effective way to reduce air pollution in this community?



- | | |
|----|---|
| a. | pass a law that states people cannot burn wastes |
| b. | help people to heat their homes more efficiently |
| c. | make traveling by bicycle easier and safer |
| d. | invent a way to trap particulate matter from industry |

Q15.D-Evaluate

A group of students designs a model landfill. The purpose of the design is to keep as much liquid as possible in the landfill. Which best describes a step the students should do as they plan their model?

- | | |
|----|--|
| a. | They should decide what kind of liquid to pour on the model. |
| b. | They should compare their model with another group's. |
| c. | They should decide how to collect the liquid that runs out of the model. |
| d. | They should see how many landfills there are in the United States. |

Q16.M-D-Evaluate

Decreasing the use of fossil fuels like coal and oil will decrease all of the forms of air pollution except:

- | | |
|----|--------------------|
| a. | Particulate matter |
| b. | Photochemical smog |
| c. | Acid precipitation |
| d. | CFCs |

Q17.D-Evaluate

Which would provide the most reliable data about the genetic factors that affect plant growth?

- | | |
|----|---|
| a. | two plants of different species grown in the same conditions |
| b. | three plants of different species, each given a different amount of light |
| c. | one plant grown in ideal environmental conditions |
| d. | two plants of the same species grown in the same environmental conditions |

Q18.E-M-Understand

Which describes a step people can take to help minimize the effects of using land for agriculture?

- | | |
|----|--|
| a. | Use more land for farms. |
| b. | Increase the number of different pesticides used. |
| c. | Remove crops quickly to increase erosion of soil. |
| d. | Plant crops that may attract different kinds of insects. |

Q19.E-Remember

Hydra reproduce by: _____.

- | | |
|----|---------------------|
| a. | Budding |
| b. | Fission |
| c. | Regeneration |
| d. | Sexual reproduction |

Q20.E-Understand

Which animal behavior attracts mates by competing with members of the same species?

a.	Aggression
b.	Submission
c.	Courtship
d.	Territory

Part 2

10 Questions- Written questions

Q1.E- Remember

Complete the table and state of each example is sexual or asexual reproduction.

a. A starfish regenerating a lost arm to form a new individual.	Asexual reproduction
b. A flowering plant producing seeds through pollination and fertilization.	sexual reproduction
c. A male and female bird combining their genetic material to form a new offspring.	sexual reproduction
d. A single celled organism divides into half to create two identical daughter cells.	asexual reproduction

Q2.E-M-Understand

Describe the difference between innate and learned behavior.

Innate behavior is a behavior that has been inherited.

learned behavior is a behavior that is learned through experience and time.

Any answer with the same meaning will be accepted.

Q3.D-Create

Complete the Punnett Square then answer the question.

Male fly with Curly Wings (BB)

Female fly with straight wings (bb)

	B	B
b	Bb	Bb
b	Bb	Bb

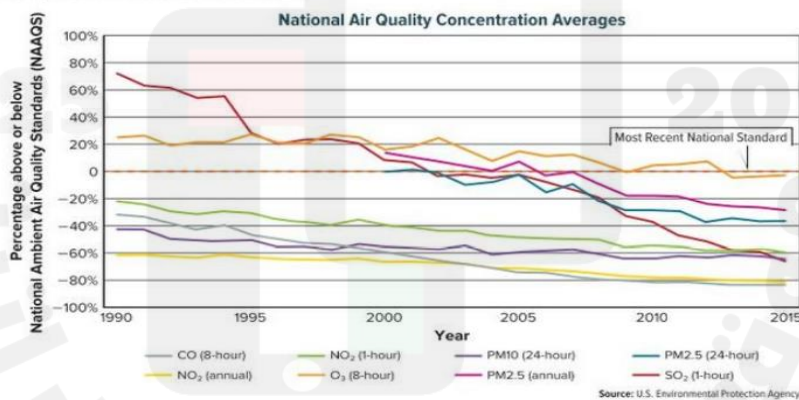
3a. What is the phenotype ratio?

Curly wings: Straight wings

4:0

Q4.D-Evaluate

Study the graph and answer the questions that follow.



4a. What information does this graph show? National air quality averages

4b. What trends do you notice in the data? air pollution is decreasing

4c. Using the data, give a reason why air pollutants are increasing or decreasing? they are decreasing because people are using less of these gasses

Q5.E-M-Remember/Understand

Look at the picture and answer the questions.



5a. What phenomenon is shown? **Deforestation**

5b. Write 2 impacts this has on land. **animal habitat is destroyed, atmosphere is affected-less oxygen**

Q6.M-D-Analyze

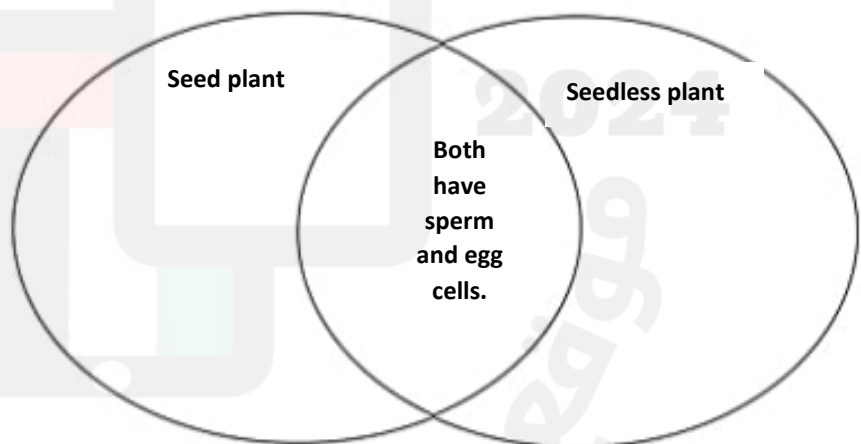
Compare Sexual reproduction in seed and seedless plants.

Seed plants:

- 1-Flowering and flowerless
- 2-Pollen contains sperm
- 3-Female structure contains egg
- 4-They join by fertilization
- 5-Grow from seeds

Seedless plant:

- No seeds
- Grow from spores.
- Can reproduce asexually.



Q7.E-Apply

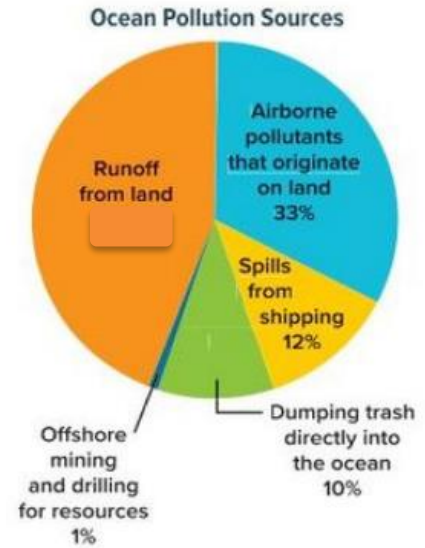
Calculate the percentage of runoff from land as a source of ocean pollution.

Student should add the rest of the percentage and subtract from 100.

$$33+12+10+1= 56$$

$$100 - 56= 44\%$$

44%



Q8.M-Apply

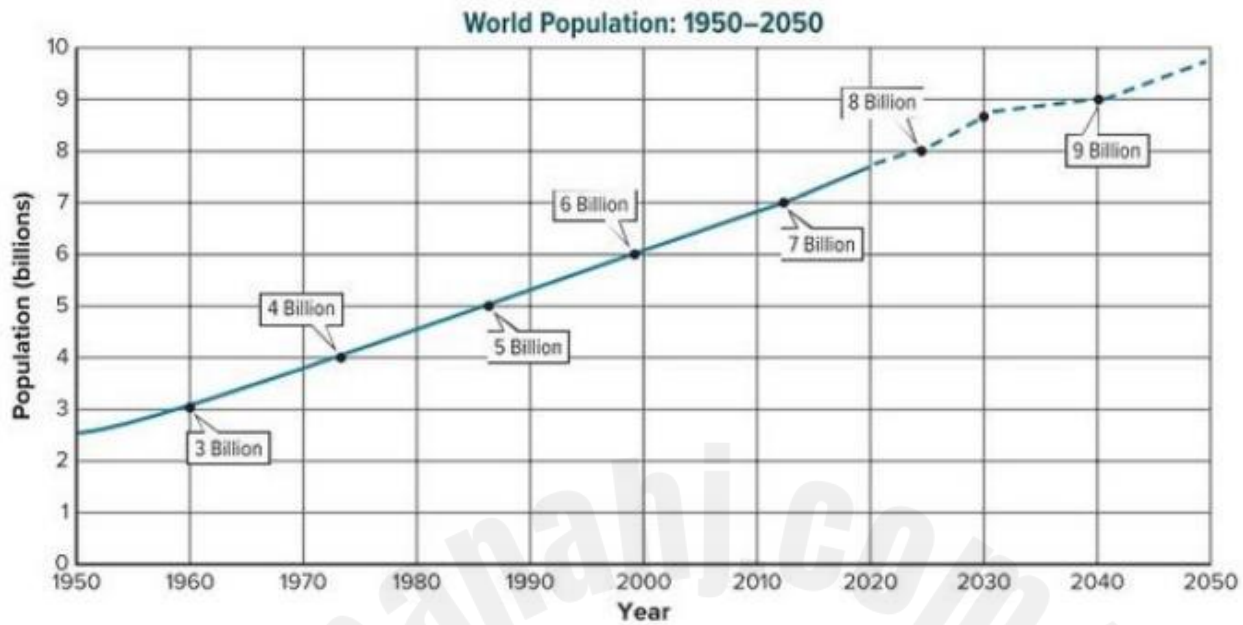
Study the pictures and answer the questions.



8a. What type of air pollution is shown? **Photochemical Smog**

8b. Which 2 chemicals react to form this pollution? **nitrogen dioxide and ozone**

Q9. E-Analyze



9a. What trend is shown here? **an increase in the world population**

9b. What happens as the population grows? (Use the term natural resources in your answer).

As the population increases, the need for natural resources increases.

***** End of the Exam*****