

شكراً لتحميلك هذا الملف من موقع المناهج الإماراتية



مراجعة الدرس الأول survival Plant بقاء النبات

[موقع المناهج](#) ← [المناهج الإماراتية](#) ← [الصف الخامس](#) ← [علوم](#) ← [الفصل الثالث](#) ← [الملف](#)

تاريخ إضافة الملف على موقع المناهج: 2024-04-27 09:53:52

التواصل الاجتماعي بحسب الصف الخامس



اضغط هنا للحصول على جميع روابط "الصف الخامس"

روابط مواد الصف الخامس على تلغرام

[الرياضيات](#)

[اللغة الانجليزية](#)

[اللغة العربية](#)

[التربية الاسلامية](#)

المزيد من الملفات بحسب الصف الخامس والمادة علوم في الفصل الثالث

[ملخص الدرس الأول survival Plant بقاء النبات](#)

1

[حل أسئلة الامتحان النهائي الالكتروني انسابير](#)

2

[أسئلة الامتحان النهائي الورقي انسابير](#)

3

[أسئلة الامتحان النهائي الالكتروني بريدج](#)

4

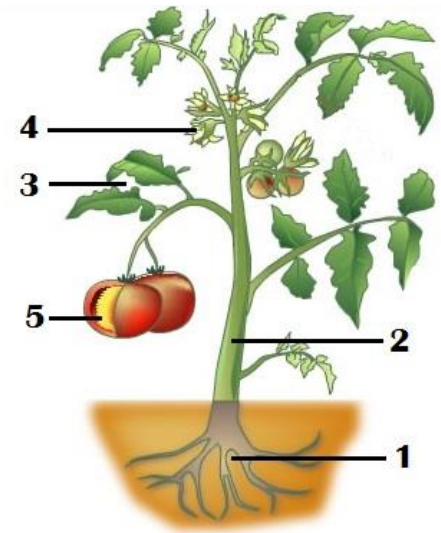
[أسئلة الامتحان النهائي الورقي بريدج](#)

5

Review lesson 1: Plants survival

Q1: Label parts of plant:

- 1- Root
- 2- Stem
- 3- Leaves
- 4- Flower
- 5- Fruit



Q2: Mention three things plant need to survival

- 1-space
- 2-water
- 3-air

Q3: what are release from the plant?

- 1-oxygen
- 2- water vapor

Q4: complete the statement

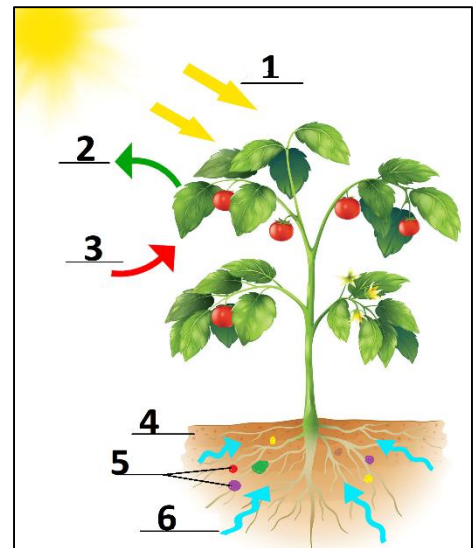
1. The plant tissue that carries food materials from the leaves to the rest of the plant is the **phloem**
2. Vascular tissue that transports water and minerals from a plant's roots is known as **xylem**
3. The important gases, carbon dioxide and oxygen, enter and leave the leaf through the **stomata**
4. water loss from the leaves plant by process is called **transpiration**
5. What does the phloem transport? **Food**
6. Cactus can grow in **desert** with **litttle** rain
7. woody vines can grow on rainforests trees and climb high into the tree canopy to **get sunlight**

Q5: write concept for each definition:

	Concept	Definition
1	Energy	Ability to do work or change somethings .
2	Phloem	plant vascular tissue that transport foods made in the leaves to all other parts of the plant.
3	Xylem	plant vascular tissue that transport water and dissolved minerals from the roots to the rest of the plant
4	Stomata	tiny openings or pores in the plant tissue that allow for gas exchange.
5	Transpiration	Release extra water vapor into the air from their leaves.
6	Nutrient	any substance that living things need to live , grow and stay healthy .

Q6: Label plant Needs to survive

- 1- sunlight
- 2- oxygen
- 3- carbon dioxide
- 4- soil
- 5- nutrients
- 6- water



Q7: What Happens

1-What Happens if Plants Are Planted Too Close Together?

compete for the same sunlight, water and soil nutrients.

2-What would happen to the plant if it is not planted in the soil?

They cannot grow without soil

3-What Happens if Plants Are Planted soil without nutrients?

The plant will not grow healthy

4-What happens if a plant is kept in dark without sunlight?

The plant will die; it cannot produce food without sunlight.

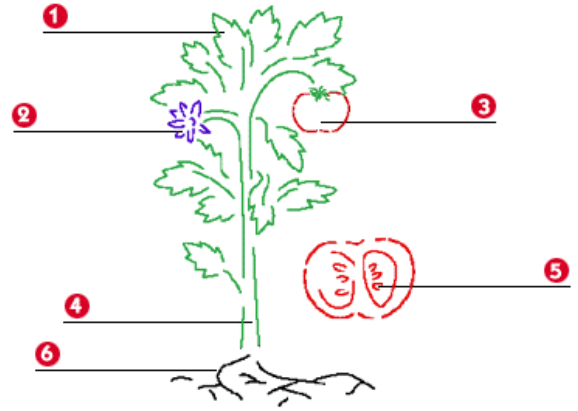
Q8: choose the correct answer:

1-What plant structure transfers sugars throughout the plant?

- A. Phloem
- B. Transpiration
- C. Xylem
- D. Stomata

2-What part of the plant is #6?

- A. leaf
- B. root
- C. fruit
- D. stem



3- What is the function of the stem?

- A. To make food for the plant.
- B. To reproduce and makes seeds.
- C. To transport water and minerals through the plant.
- D. To bring in water and minerals from the ground.

4- What is the function of the leaves?

- A. To make food for the plant.
- B. To transport water and minerals through the plant.
- C. To reproduce and make seeds.
- D. To bring water and minerals from the soil into the plant.

5- What are the needs of plants?

- A. Air
- B. Sunlight
- C. Water
- D. Soil
- E. All of the Above

6-Which structure transports water throughout the plant

- A. Phloem
- B. Xylem
- C. Stomata
- D. Cambium

7-Which small openings bottom of the leaves that allow for air exchange

- A. Xylem
- B. Phloem
- C. Cambium
- D. Stomata

8-Which part of a plant absorb sunlight?

- A. Stem
- B. Flower
- C. Roots
- D. Leaves

9-What part of the plant soaks up water and nutrients from the ground?

- A. leaves
- B. stem
- C. roots
- D. flower

10-In the next graph, during which week did Plant A grow most?

- A. First week
- B. Second week
- C. Third week
- D. Fourth week

11-In the next graph, Were the two plants of the same height during any week shown here?

- A. At the end of 1st week
- B. At the end of 2nd week
- C. At the end of 3rd week
- D. At the end of 4th week

