

أسئلة الامتحان النهائي القسم الورقي منهج انسباير



تم تحميل هذا الملف من موقع المناهج الإماراتية

موقع المناهج ⇨ المناهج الإماراتية ⇨ الصف التاسع المتقدم ⇨ علوم ⇨ الفصل الثالث ⇨ ملفات متنوعة ⇨ الملف

تاريخ إضافة الملف على موقع المناهج: 20:05:26 2025-06-18

ملفات اكتب للمعلم اكتب للطالب ا اختبارات الكترونية ا اختبارات ا حلول ا عروض بوربوينت ا أوراق عمل
منهج انجليزي ا ملخصات وتقارير ا مذكرات وبنوك ا الامتحان النهائي للمدرس

المزيد من مادة
علوم:

التواصل الاجتماعي بحسب الصف التاسع المتقدم



صفحة المناهج
الإماراتية على
فيسبوك

الرياضيات

اللغة الانجليزية

اللغة العربية

التربية الاسلامية

المواد على تلغرام

المزيد من الملفات بحسب الصف التاسع المتقدم والمادة علوم في الفصل الثالث

حل مراجعة نهائية وفق الهيكل الوزاري منهج بريدج

1

مراجعة نهائية وفق الهيكل الوزاري منهج انسباير

2

حل مراجعة شاملة وفق الهيكل الوزاري منهج بريدج

3

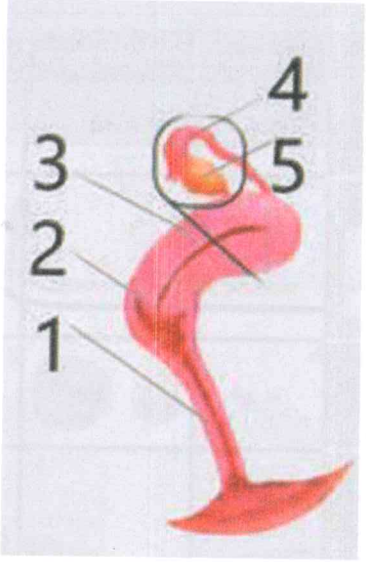
حل تجميعية أسئلة امتحانات وزارية سابقة القسم الالكتروني

4

حل نموذج تدريبي للاختبار النهائي وفق الهيكل الوزاري

5

Question		3
Which of the following results from the second meiotic division of the oocyte if the egg is fertilized?		
A		Sperm formation
B		The integration of the first polar body
C		Development of a zygote
D		The integration of the second polar body

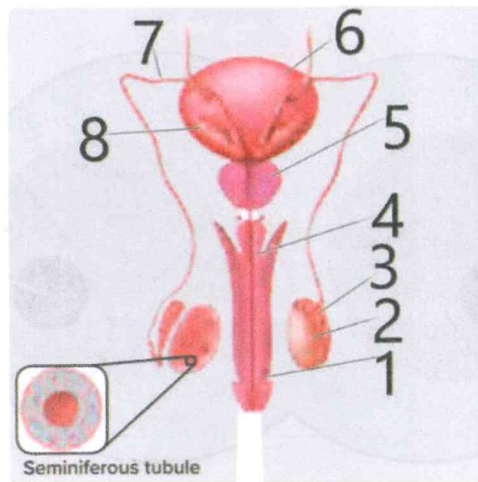
Question		4
The figure below illustrates the female reproduction system. Which of the following numbers represents the ovary?		
		
A		1
B		2
C		4
D		5



Question

5

The figure below illustrates the male reproduction system. Which of the following numbers represents the Epididymis?



A

1

B

3

C

5

D

7

Question

6

Which of the following structures represents a thin layer sac formed around the embryo?

A

Amnion

B

Blastocyst

C

Chorion

D

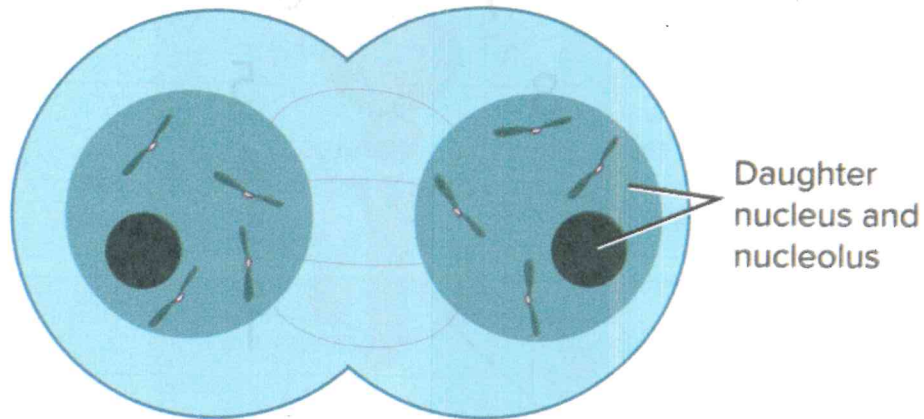
Umbilical Cord



Question

7

Which stage of Mitosis is shown in the picture below?



A

Anaphase

B

Metaphase

C

Interphase

D

Telophase

Question

8

Which of the following is correct regarding Mitosis?

A

Only one division takes place

B

Occurs only in reproductive cells.

C

Involved in the production of gametes.

D

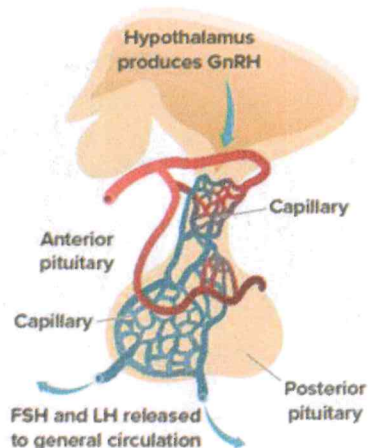
Two sets of divisions take place.



Question

9

In the picture below, which of the following hormones stimulates the production of FSH and LH hormones?



A

Estrogen

B

Progesterone

C

Dopamine

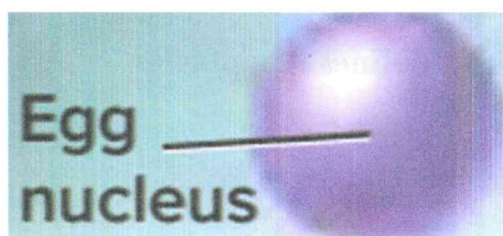
D

GnRH hormone

Question

10

How many chromosomes are there in the **not fertilized** human egg?



A

15

B

30

C

23

D

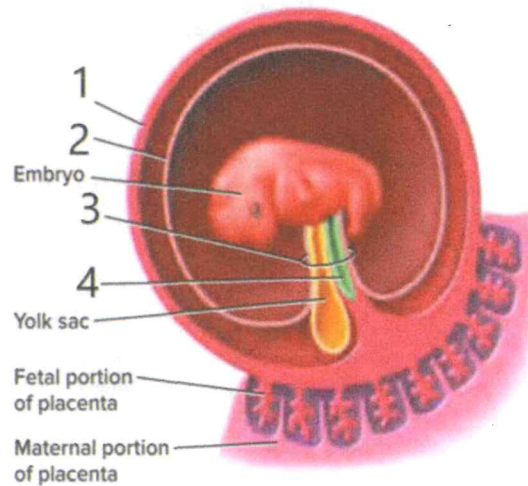
46



Question

11

Which of the following numbers in the picture below represents the allantois?



A

1

B

2

C

3

D

4

Question

12

Which of the following best defines Apoptosis?

A

The programmed cell death

B

The incomplete mitosis

C

The complete mitosis

D

The cell growth





Question

13

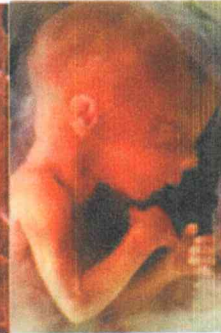
Which of the following pictures represents the fetus at 5-6 weeks?



1



2



3



4

A

1

B

2

C

3

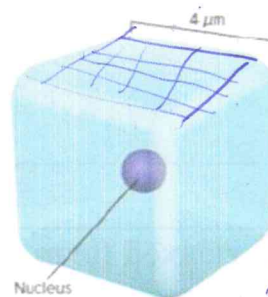
D

4

Question

14

What is the ratio of surface area to volume of the cell below?



A

1:1

B

2:1

C

3:2

D

6:1

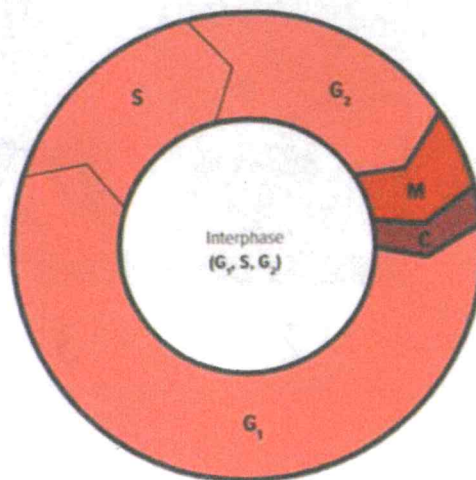


8043

Question

15

The figure below illustrates the cell cycle. Which of the following represents the stage where the cell prepares for Mitosis?



A

S

B

G1

C

G2

D

M

Question

16

Which of the following represents a relaxed form of DNA in the nucleus of a cell?

A

Chromosome

B

Chromatin

C

Sister Chromatid

D

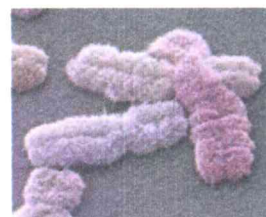
Homologous Chromosome



Question

17

What is the cell structure that joins two sister chromatids?



A

Centriole

B

Centromere

C

Spindle apparatus

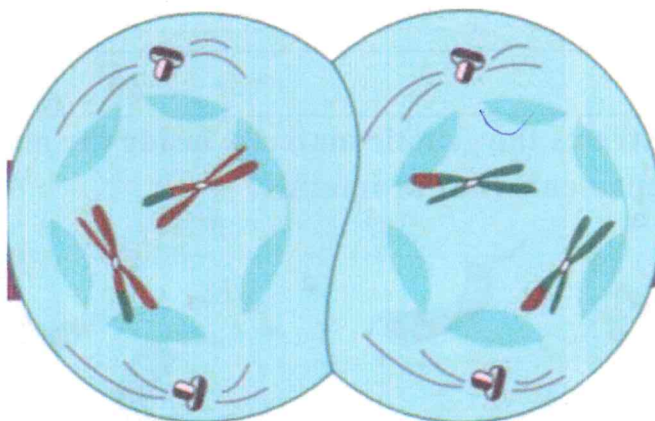
D

Equator

Question

18

Which stage of Meiosis is shown in the picture below?



A

Prophase 1

B

Metaphase 1

C

Prophase 1

D

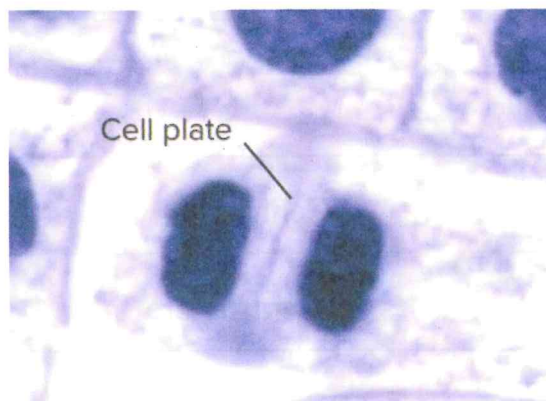
Telophase 1



Question

19

In the figure below, which of the following occurs during Cytokinesis?



A

Cytokinesis results in genetic diversity in animal cells

B

A cell plate forms in plant cells

C

Cytokinesis results in genetic diversity in plant cells

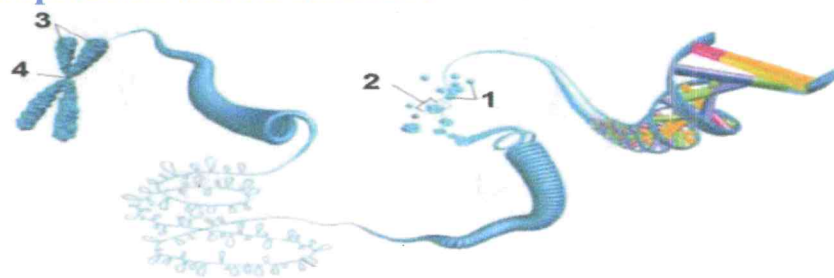
D

A cell plate forms in animal cells

Question

20

The figure below illustrates the genetic material inside the nucleus. Which of the following numbers represents the chromatids?



A

1

B

2

C

3

D

4

End of Questions



Circle the letter corresponding to the correct answer.



Question

1

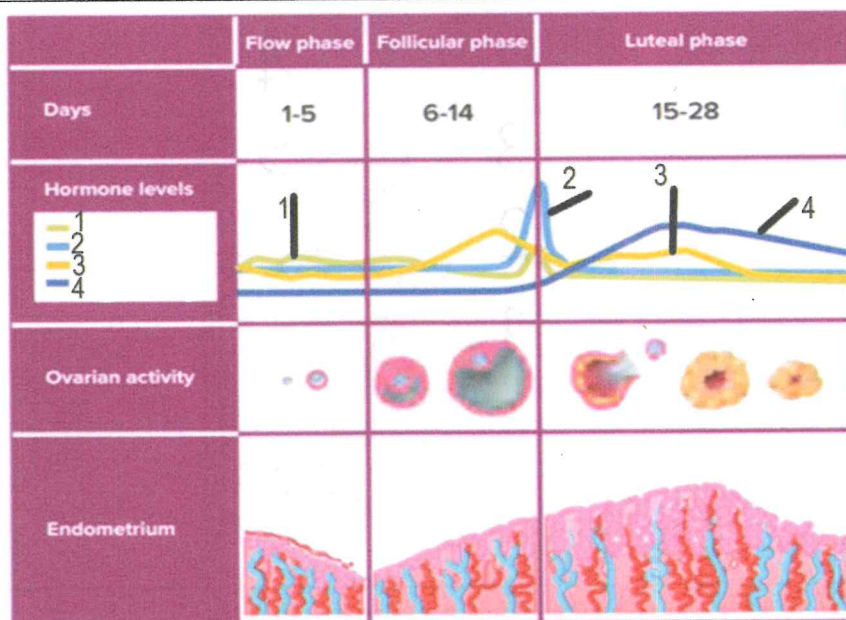
Which of the following is an effect of the FSH hormone in the testes?

A		Female pregnancy
B		Female menstrual cycle
C		The production of sperms
D		Sperm temperature control

Question

2

Which of the following numbers represent the Estrogen hormone ?



A		1
B		2
C		3
D		4

