

تم تحميل هذا الملف من موقع المناهج الإماراتية



حل النموذج التدريبي للاختبار النهائي وفق الهيكل الوزاري

موقع المناهج ← المناهج الإماراتية ← الصف الحادي عشر ← لغة انجليزية ← الفصل الثاني ← حلول ← الملف

تاريخ إضافة الملف على موقع المناهج: 18:05:24 2025-03-10

ملفات اكتب للمعلم اكتب للطالب الاختبارات الكترونية | اختبارات | حلول | عروض بوربوينت | أوراق عمل
منهج انجليزي | ملخصات و تقارير | مذكرات و بنوك | الامتحان النهائي للمدرس

المزيد من مادة
لغة انجليزية:

إعداد: مدرسة درب السعادة

التواصل الاجتماعي بحسب الصف الحادي عشر



الرياضيات



اللغة الانجليزية



اللغة العربية



التربية الاسلامية



المواد على تلغرام

صفحة المناهج
الإماراتية على
فيسبوك

المزيد من الملفات بحسب الصف الحادي عشر والمادة لغة انجليزية في الفصل الثاني

النموذج التدريبي للاختبار النهائي وفق الهيكل الوزاري

1

ملزمة شاملة وفق الهيكل الوزاري المسار المتقدم

2

ملخص وشرح هيكلية الاختبار الوزاري مع أمثلة محلولة المسار المتقدم

3

مواضيع مقترحة تدريبية للامتحان النهائي المسار المتقدم

4

مواضيع مقترحة تدريبية للامتحان النهائي المسار العام

5



Student's name _____

Grade11/Section _____

Date : ____/____/2025

**Final Exam - Preparation Exercises
Term 2- 2024/2025**

Part 1: Reading Comprehension

ENG.08.2.3.XX.030 Read and understand the overall meaning of extended texts on concrete and some abstract topics.

ENG.08.2.3.XX.031 Read and identify specific information in extended texts on concrete and some abstract topics.

ENG.08.2.3.XX.032 Read and understand details in extended texts on concrete and some abstract topics.

ENG.08.2.3.XX.035 Identify the mood and tone in extended texts on familiar and some unfamiliar concrete topics.

Q1-Read the following text and answer the questions below:

Advertising is a powerful tool that shapes consumer behavior and influences purchasing decisions. Companies use various strategies to attract potential buyers, such as emotional appeal, celebrity endorsements, and persuasive language. Advertisements can be found everywhere—in newspapers, on television, across social media, and even on billboards. While some ads aim to inform the public about products, others manipulate emotions to create a sense of urgency or desire.

One of the most effective techniques in advertising is the use of slogans and jingles. Catchy phrases like "Just Do It" or "I'm Lovin' It" stay in people's minds long after they hear them. Similarly, music in commercials can evoke certain emotions, making a product more memorable. This psychological impact encourages consumers to associate positive feelings with specific brands, increasing the likelihood of purchase.

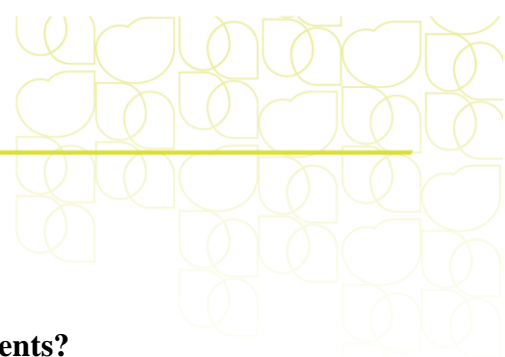
Despite its benefits, advertising has its drawbacks. Some ads can be misleading, exaggerating the quality of a product or using unrealistic images to attract customers. This raises ethical concerns, especially when targeting vulnerable audiences like children or elderly people. Governments and consumer protection agencies regulate advertisements to ensure companies do not engage in false advertising, but some deceptive practices still slip through.

In today's digital age, online advertising has revolutionized marketing. Social media platforms collect user data to display personalized ads tailored to individual interests. While this can be convenient, it also raises privacy concerns. Many consumers are unaware of how



their data is used, leading to debates about the ethics of targeted advertising. As technology continues to evolve, so too will the methods used by advertisers to capture consumer attention.

1. **What is the main idea of the passage?**
 - a) Advertising is harmful and should be banned.
 - b) **Advertising influences consumer behavior in various ways.**
 - c) Social media is the best platform for advertisements.
 - d) Music is the most important aspect of advertising.
2. **What does the word "persuasive" in paragraph 1 most likely mean?**
 - a) Informative
 - b) **Convincing**
 - c) Negative
 - d) Untrue
3. **What is the purpose of slogans and jingles in advertising?**
 - a) To provide detailed information about a product
 - b) **To create a lasting impression on consumers**
 - c) To warn people about misleading advertisements
 - d) To compare different brands fairly
4. **Which of the following is an example of an ethical concern in advertising?**
 - a) Using emotional appeal to sell a product
 - b) Featuring celebrities in commercials
 - c) **Targeting children with misleading claims**
 - d) Displaying ads on billboards
5. **What can be inferred about online advertising from paragraph 4?**
 - a) It is completely safe and private.
 - b) Consumers fully understand how their data is used.
 - c) **It relies on user data to create personalized ads.**
 - d) Social media does not allow targeted advertisements.
6. **What does the pronoun "this" in paragraph 3 refer to?**
 - a) Government regulations
 - b) Misleading advertisements
 - c) **Ethical concerns**
 - d) Targeting vulnerable audiences
7. **What is the writer's attitude toward advertising?**
 - a) Completely negative and critical
 - b) **Neutral, discussing both benefits and drawbacks**
 - c) Strongly supportive of all forms of advertising
 - d) Indifferent and uninterested in the topic
8. **Which of the following is NOT mentioned as an advertising strategy?**
 - a) Celebrity endorsements
 - b) Psychological tricks
 - c) **Government sponsorship**
 - d) Emotional appeal



9. According to the passage, why do governments regulate advertisements?

- a) To promote certain brands over others
- b) To make advertising illegal
- c) **To prevent deceptive or misleading advertising**
- d) To ensure companies make more profits

10. How might advertising change in the future? (HOTS – Higher Order Thinking Skills)

- a) It will remain exactly the same as today.
- b) **New methods will develop as technology evolves.**
- c) Social media will ban all advertisements.
- d) Advertisers will stop using slogans and jingles.

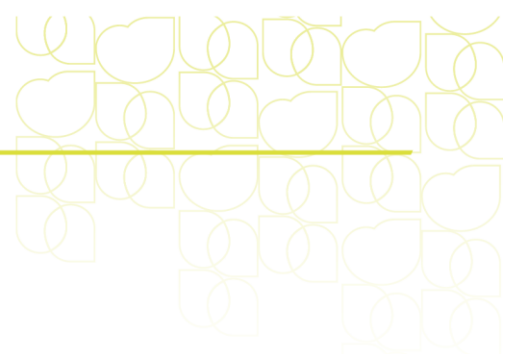
Q2 -Read the following text and answer the questions below:

Extreme weather events, such as hurricanes, blizzards, and heatwaves, can pose serious threats to human life and property. Understanding how to prepare for and respond to these conditions is crucial for survival. Meteorologists use advanced technology to predict severe weather, giving people time to take necessary precautions. However, despite early warnings, many individuals underestimate the dangers and fail to prepare adequately.

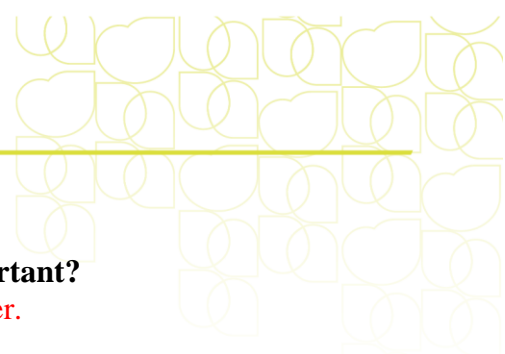
One of the key strategies for surviving extreme weather is having an emergency plan. This includes stocking up on essential supplies like food, water, batteries, and medical kits. During hurricanes or tornadoes, seeking shelter in a secure location is vital, while in heatwaves, staying hydrated and avoiding direct sunlight can prevent heat-related illnesses. Knowing what to do in different weather emergencies can mean the difference between life and death.

Natural disasters not only affect individuals but also have long-term consequences on communities. Homes and infrastructure can be destroyed, leading to economic hardship and displacement. Governments and aid organizations play a critical role in disaster response by providing relief supplies, rebuilding efforts, and medical assistance. Despite these efforts, recovery can take years, especially in areas that lack resources.

As climate change continues to influence global weather patterns, extreme weather events are becoming more frequent and intense. Scientists warn that rising temperatures contribute to stronger storms, prolonged droughts, and unpredictable weather shifts. To reduce the impact of these events, communities must invest in better infrastructure, early warning systems, and sustainable practices. Preparing for the future is just as important as responding to the present.



1. **What is the main idea of the passage?**
 - a) Extreme weather is impossible to predict.
 - b) **Proper preparation can help people survive extreme weather.**
 - c) Governments should provide free emergency supplies to everyone.
 - d) Heatwaves are the most dangerous weather events.
2. **What does the word "underestimate" in paragraph 1 most likely mean?**
 - a) Ignore completely
 - b) Overprepare for
 - c) **Think of as less dangerous than it really is**
 - d) Predict accurately
3. **Why is it important to have an emergency plan?**
 - a) **It helps people react appropriately in dangerous weather conditions.**
 - b) It prevents all property damage during natural disasters.
 - c) It ensures that governments respond more quickly.
 - d) It stops climate change from worsening.
4. **Which of the following is NOT mentioned as part of disaster recovery?**
 - a) Providing medical assistance
 - b) Rebuilding infrastructure
 - c) **Expanding cities to new areas**
 - d) Delivering relief supplies
5. **What can be inferred about the role of climate change in extreme weather?**
 - a) It has no impact on the frequency of natural disasters.
 - b) **It makes extreme weather events more common and intense.**
 - c) It only affects certain parts of the world.
 - d) It is completely unrelated to hurricanes and storms.
6. **What does the pronoun "these" in paragraph 3 refer to?**
 - a) Governments and aid organizations
 - b) Homes and infrastructure
 - c) Relief supplies
 - d) **Recovery efforts**
7. **What is the writer's attitude toward extreme weather?**
 - a) **Concerned, emphasizing the importance of preparation**
 - b) Indifferent, stating that disasters are unavoidable
 - c) Optimistic, believing extreme weather is not a serious issue
 - d) Pessimistic, saying that survival is impossible
8. **Which of the following strategies is recommended during a heatwave?**
 - a) Seeking shelter in a basement
 - b) **Staying hydrated and avoiding direct sunlight**
 - c) Using candles and flashlights for light
 - d) Keeping all windows open to allow air circulation



9. **Why do scientists believe that early warning systems are important?**
 - a) **They help reduce the destruction caused by extreme weather.**
 - b) They stop climate change from happening.
 - c) They provide long-term economic benefits.
 - d) They prevent all-natural disasters completely.
10. **What is one possible future consequence of climate change? (HOTS – Higher Order Thinking Skills)**
 - a) The number of extreme weather events will decrease.
 - b) **More investment in emergency preparedness will be needed.**
 - c) People will stop experiencing hurricanes and storms.
 - d) Scientists will stop researching climate-related issues.

Q2 -Read the following text and answer the questions below:

Entrepreneurs play a crucial role in shaping economies by bringing innovation, creating jobs, and solving problems through their businesses. These individuals take risks by investing time, money, and effort into their ventures, hoping to turn their ideas into successful enterprises. Some entrepreneurs start small businesses, while others build large corporations that impact entire industries. Despite the potential for success, entrepreneurship requires perseverance, creativity, and the ability to adapt to challenges.

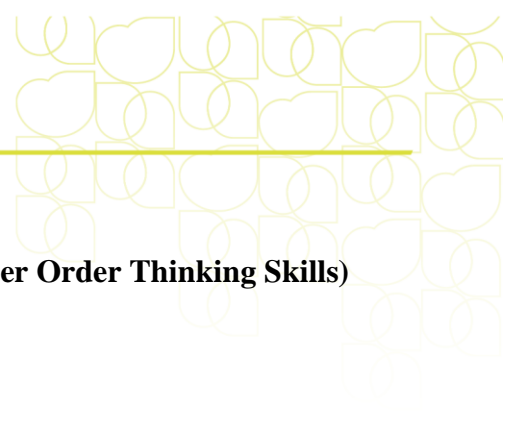
One of the biggest challenges entrepreneurs face is financial risk. Starting a business often requires significant capital, and not all ventures become profitable. Many entrepreneurs seek funding through bank loans, investors, or personal savings. However, even with financial support, businesses can fail due to poor management, changing market trends, or strong competition. To succeed, entrepreneurs must conduct thorough research, plan carefully, and remain flexible in their approach.

Beyond financial risks, entrepreneurs also need strong leadership and problem-solving skills. They must make critical decisions, manage employees, and develop strategies to grow their businesses. Networking is also essential, as forming partnerships and connecting with experienced professionals can provide valuable insights and opportunities. Entrepreneurs who continuously learn and adapt to new technologies and market demands have a better chance of long-term success.

The future of entrepreneurship is constantly evolving with advancements in technology and globalization. E-commerce, digital marketing, and artificial intelligence are transforming the way businesses operate. More entrepreneurs are now focusing on sustainable and socially responsible ventures. As industries continue to change, those who embrace innovation and respond to consumer needs will have a competitive edge in the business world.



1. **What is the main idea of the passage?**
 - a) Entrepreneurs always succeed if they work hard.
 - b) **Entrepreneurship is risky but can lead to success through innovation and adaptability.**
 - c) Only large corporations shape the economy, not small businesses.
 - d) Entrepreneurs should avoid risks at all costs.
2. **What does the word "perseverance" in paragraph 1 most likely mean?**
 - a) Giving up easily
 - b) **The ability to keep going despite challenges**
 - c) Taking financial risks
 - d) Investing large amounts of money
3. **What is one major challenge entrepreneurs face?**
 - a) A guaranteed high income
 - b) Unlimited financial resources
 - c) **Financial risk and possible business failure**
 - d) No need for research or planning
4. **Which of the following is NOT mentioned as a reason businesses may fail?**
 - a) Poor management
 - b) Changing market trends
 - c) High competition
 - d) **A lack of government support**
5. **What can be inferred about the role of networking in entrepreneurship?**
 - a) It is not necessary for business success.
 - b) **It helps entrepreneurs gain useful knowledge and opportunities.**
 - c) It only benefits large businesses, not small startups.
 - d) It replaces the need for financial investment.
6. **What does the pronoun "they" in paragraph 3 refer to?**
 - a) Market trends
 - b) Employees
 - c) **Entrepreneurs**
 - d) Competitors
7. **What is the writer's attitude toward entrepreneurship?**
 - a) **Positive, acknowledging both the challenges and opportunities.**
 - b) Negative, focusing only on the risks of starting a business.
 - c) Indifferent, stating that entrepreneurship is unimportant.
 - d) Overly optimistic, suggesting that all businesses succeed.
8. **According to the passage, how is technology affecting entrepreneurship?**
 - a) It is making businesses less competitive.
 - b) **It is transforming how businesses operate.**
 - c) It is limiting opportunities for small entrepreneurs.
 - d) It is reducing the need for innovation.
9. **Why is adaptability important for entrepreneurs?**
 - a) **It helps them respond to changes in the market.**
 - b) It ensures that they never face challenges.
 - c) It guarantees immediate success.
 - d) It allows them to avoid competition entirely.



10. How might entrepreneurship change in the future? (HOTS – Higher Order Thinking Skills)

- a) It will disappear due to financial risks.
- b) **It will rely more on technology and sustainability.**
- c) Entrepreneurs will stop taking risks.
- d) The business world will remain unchanged.

Part 2: Grammar

ENG.08.2.2.XX.019 Identify a wide range of features of text organization and structure.

Q-Read the following sentences and choose the correct answer:

1. By the time the project is presented, all necessary changes _____ by the editorial team.

- a) will be making
- b) **will have been made**
- c) will have made
- d) will have been making

2. When we arrive at the venue, the decorations _____ by the event planners.

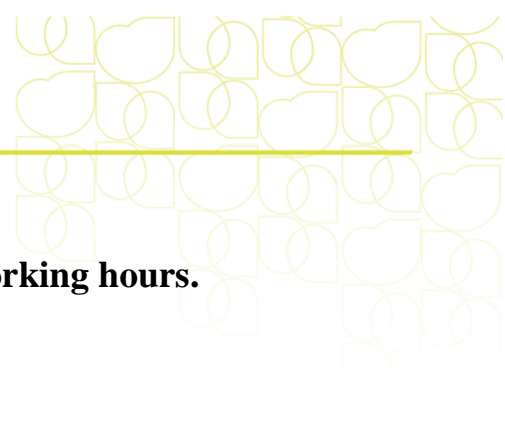
- a) **will have been set up**
- b) will be setting up
- c) will have set up
- d) will have been setting up

3. _____ was innovation that allowed the company to surpass its competitors.

- a) **It**
- b) That
- c) What
- d) There

4. It was in 1969 that the first moon landing _____.

- a) **took place**
- b) was taking place
- c) had been taken place
- d) had taken place



5. _____ the employees appreciated most was the flexible working hours.

- a) That
- b) It
- c) **What**
- d) Which

6. It is said that the missing documents _____ in the CEO's office.

- a) **have been found**
- b) had found
- c) have found
- d) was found

7. The scientist was reported _____ a groundbreaking discovery.

- a) to be making
- b) to have been made
- c) **to have made**
- d) to have been making

8. The government is believed _____ new policies to address inflation.

- a) to introduce
- b) **to have introduced**
- c) to be introduced
- d) to have been introducing

9. By the time we arrived, the guests _____ for over an hour.

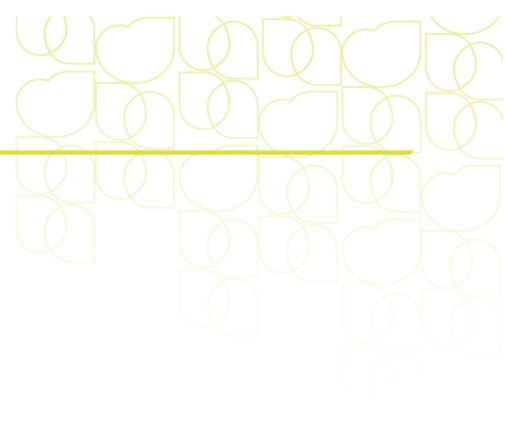
- a) **had been waiting**
- b) had waited
- c) waited
- d) were waiting

10. She _____ when her phone suddenly rang.

- a) **was studying**
- b) had studied
- c) had been studying
- d) studied

11. He finally apologized because he _____ he had been rude.

- a) **realized**
- b) was realizing



- c) had realized
- d) had been realizing

12. **By the end of the day, they _____ all their tasks.**

- a) completed
- b) **had completed**
- c) were completing
- d) had been completing

13. **_____ the employees _____ the management agreed on the new policy.**

- a) **Not only / but also**
- b) Either / or
- c) Neither / and
- d) Both / and not

14. **The research suggests that the experiment was _____ flawed _____ inconclusive.**

- a) both / or
- b) **neither / nor**
- c) only / but also
- d) either / and

15. **He had to choose _____ staying in his current job _____ starting his own business.**

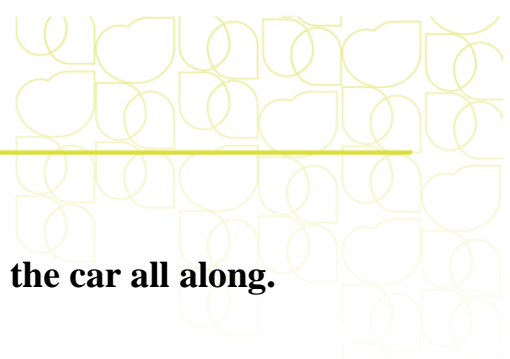
- a) not only / but also
- b) both / and
- c) neither / nor
- d) **between / and**

16. **She didn't go to the party because she _____ the invitation.**

- a) didn't receive
- b) **hadn't received**
- c) wasn't receiving
- d) hadn't been receiving

17. **By the time the guests arrived, the host _____ all the preparations.**

- a) made
- b) was making
- c) **had made**
- d) had been making



18. When I finally found my keys, I realized I _____ them in the car all along.

- a) left
- b) **had left**
- c) was leaving
- d) had been leaving

19. While she _____ for the train, she suddenly remembered she had left her bag at home.

- a) had waited
- b) had been waiting
- c) waited
- d) **was waiting**

20. They didn't understand the lecture because they _____ the previous class.

- a) didn't attend
- b) **hadn't attended**
- c) weren't attending
- d) had been attending

Part 3: Maze

ENG.08.2.2.XX.019 Identify a wide range of features of text organization and structure.

Read the texts below and fill in the blanks with the correct option:

(Maze 1)

By the time the new marketing strategy is implemented, all necessary adjustments _____ (will be making / **will have been made** / will have made). The board of directors, however, was reported _____ an unexpected decision regarding the budget allocation (**to have made** / to be making / to have been making). Since the costs _____ significantly in the last quarter, the company had to reconsider its investment strategies (**had decreased** / would decrease / were decreasing). As a result, a new sustainability policy _____ by the end of the fiscal year (**will have been introduced** / will introduce / will be introducing).



If the initiative proves successful, not only the executives _____ the employees will benefit from the improved workflow (**but also / or / and**). However, many investors believe the company should have _____ an alternative approach to cost management (**considered / considering / had considered**). Although some measures were implemented, a few critical issues _____ still unresolved by the auditors (**were / have been / had been**). The finance team insists that the errors _____ before the final report is released (**must correct / must be corrected / had to be corrected**).

(Maze 2)

Neither the employees _____ the management fully supported the new company policy (**nor / or / and**). By the time the investors arrived, all financial reports _____ for review (**were prepared / had been prepared / was preparing**). The audit revealed that the company _____ financial risks over the past few years (**had underestimated / underestimated / was underestimating**).

As a result, the company is now known _____ its efforts to implement environmentally friendly policies (**for / of / about**). The CEO emphasized that before the new regulations took effect, the company _____ several sustainability measures (**had already introduced / has already introduced / was introducing**). However, many critics argued that these initiatives _____ earlier to have a greater impact (**should implement / should have been implemented / should be implemented**).

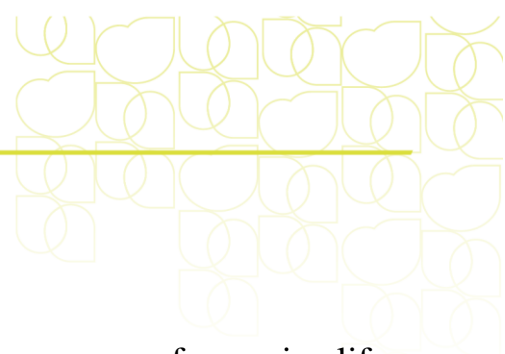
In response to these criticisms, the company assured stakeholders that by next year, all production facilities _____ to meet green energy standards (**would have been upgraded / will have been upgraded / are upgrading**). Investors are eager to see whether these efforts _____ in improved financial performance (**result / will result / will have resulted**).

Part 4: Vocabulary

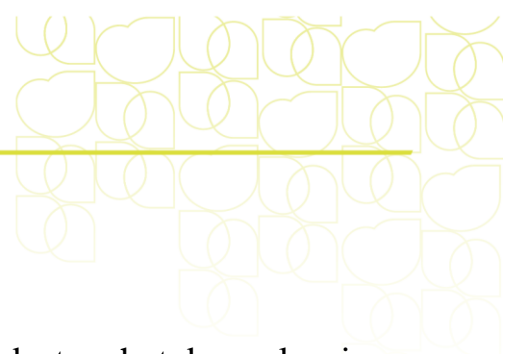
ENG.08.2.2.XX.019 Identify a wide range of features of text organization and structure.

Read the following questions and fill in the blanks with the correct option:

1. The new environmental policy aims to **mitigate** the impact of industrial pollution on local ecosystems. What does "mitigate" most likely mean in this context?
 - a) Worsen
 - b) **Reduce**



- c) Ignore
d) Intensify
2. The **proliferation** of single-use plastics has led to severe consequences for marine life, prompting calls for stricter regulations. What is the best synonym for "proliferation"?
- a) **Expansion**
b) Reduction
c) Disappearance
d) Removal
3. Despite their **tenacity**, the local activists struggled to convince the government to implement new environmental laws. What does "tenacity" suggest about the activists?
- a) They were indifferent to the issue
b) **They showed determination and persistence**
c) They were easily discouraged
d) They frequently changed their stance
4. The CEO's **pragmatic** approach to business decisions ensured the company remained profitable even during economic downturns. Which phrase best describes the CEO's approach?
- a) Idealistic and unrealistic
b) **Practical and logical**
c) Reckless and careless
d) Emotionally driven
5. Many employees admired their manager for her **astute** leadership, which allowed the company to outperform its competitors. What does "astute" most likely mean?
- a) Lacking vision
b) **Highly intelligent and perceptive**
c) Unpredictable and inconsistent
d) Uninterested in success
6. The candidate's speech was full of **grandiose** promises that lacked practical details, making voters skeptical of his true intentions. What does "grandiose" most likely mean?
- a) Humble and sincere
b) **Impressive but unrealistic**
c) Honest and transparent
d) Simple and logical
7. The company decided to **diversify** its investments to minimize financial risk. Based on the context, what is the best antonym for "diversify"?
- a) Expand
b) Vary



- c) **Specialize**
d) Distribute
8. The once-thriving town fell into **desolation** after the main industry shut down, leaving many people unemployed. Which of the following best describes the meaning of "desolation"?
- a) Prosperity and growth
b) **Isolation and emptiness**
c) Economic stability
d) Wealth and success
9. While some people saw the billionaire as a **philanthropist**, others believed his charitable acts were merely a way to enhance his public image. What is the best synonym for "philanthropist"?
- a) **A person who donates money and resources to help others**
b) A politician who seeks personal gain
c) A businessperson focused only on profit
d) A leader who controls public opinion
10. The team's proposal was **meticulous**, addressing every possible challenge that could arise during implementation. Which word is closest in meaning to "meticulous"?
- a) Careless
b) **Thorough**
c) Hasty
d) Thoughtless

Part 4: Writing

ENG.08.4.2.XX.019 Maintain a degree of control of simple and complex language structures in writing.

ENG.08.4.3.XX.016 Write extended texts on familiar and unfamiliar concrete topics.

LL6.R.In.1 Infer complex information needed for comprehension when it is not directly stated in a wide range of complex, extended texts.

1- Planning:

Write a plan for your essay below. Please note – this question asks for a plan, **NOT** a full essay. You will write the full essay in the next question.

Think about the skills and traits that are important for success in the business world. Choose the skills or traits that you think are particularly important and write an essay explaining why they are important and how they can help people succeed in their careers.



- What skill or trait do you think is most important to succeed in business?
- Why is this trait or skill important?
- How can this trait or skill help people succeed in business?

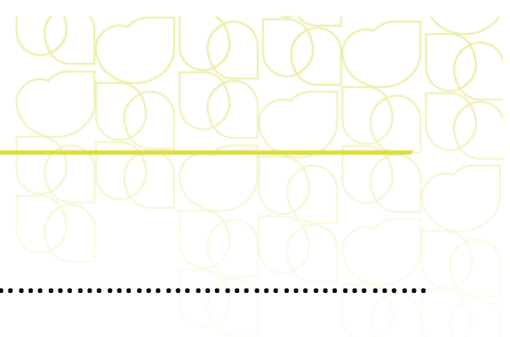
Plan:



2- Writing:

Use the plan you made above to write 200 words about the following topic:

Think about the skills and traits that are important for success in the business world. Choose the skills or traits that you think are particularly



.....

.....

.....

.....

.....

.....

.....

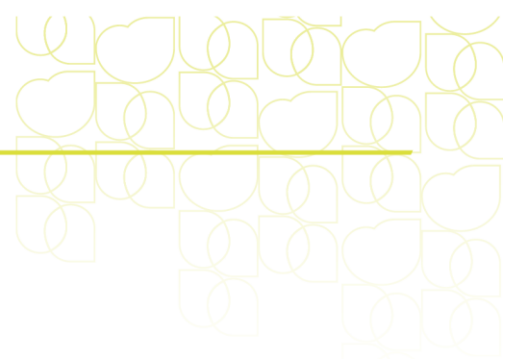
Weather Conditions

Extreme weather conditions have become increasingly common due to changes in global climate patterns. Hurricanes, droughts, and severe winter storms now occur with greater frequency and intensity, affecting millions of people worldwide. Scientists have linked these events to rising temperatures, which disrupt atmospheric balance and lead to unpredictable weather patterns. While some regions experience prolonged dry spells that devastate agriculture, others face excessive rainfall and flooding that displace entire communities.

In many cases, extreme weather has significant economic and social consequences. Businesses suffer losses due to supply chain disruptions, and governments must allocate vast resources for disaster relief efforts. Infrastructure damage, power outages, and loss of communication networks can leave affected areas struggling to recover for years. Insurance companies have also noted a surge in claims related to weather-related damages, leading to increased premiums for homeowners and businesses alike.

Despite these challenges, advancements in meteorology and technology have improved disaster preparedness. Early warning systems and predictive models now allow authorities to issue timely alerts, giving people the opportunity to evacuate or take precautionary measures. Additionally, governments and organizations have invested in sustainable solutions such as flood barriers and drought-resistant crops to mitigate the long-term impact of extreme weather. However, many argue that these efforts are only short-term fixes and that addressing climate change at its root is the only way to prevent future disasters.

As climate patterns continue to shift, individuals and communities must adapt to new realities. Urban planners are rethinking how cities are designed to withstand harsher conditions, while scientists advocate for reducing carbon emissions to slow global warming. While the future remains uncertain, one thing is clear: humanity's ability to respond to these challenges will determine the severity of their consequences in the years to come.



Q1. According to the passage, why might insurance companies increase premiums for homeowners and businesses due to extreme weather conditions?

Q2. Justify your answer:

Q3. Based on the text, what is the author's perspective on the long-term solutions for dealing with extreme weather?

Q4. Justify your answer:

